



Prideaux Road, Brixton, SW9

£495,000

2 bedroom flat - conversion for sale

## Property Details

This flat is lovely - a large, bright separate reception room runs across the front of the building with ample room to relax and dine, wooden flooring, bespoke shelving and a feature fireplace. A stylish staircase leads up to a well-executed loft-style bedroom, flooded with light thanks to multiple windows and skylights. To the rear of the property is another comfortable double bedroom, and a modern eat-in kitchen, with all you may need in terms of storage and worktop space. The contemporary bathroom is tastefully presented, benefiting from a sash window. The flat is presented tastefully and is an elegant mix of contemporary design and characterful features, benefiting from an abundance of natural light throughout. The bedrooms are well-proportioned, separated on different levels, making the apartment an ideal investment for anyone looking to rent out a spare room, or share with friends. The location will appeal to anyone contemplating moving to Clapham, Brixton or Stockwell, as all three High Streets are within a ten minute stroll.

## Features

- Two double bedrooms
- Victorian conversion
- Private entrance
- Split over two floors
- Characterful features
- Over 750 square feet of internal living space
- Within a ten-minute walk to Clapham, Brixton and Stockwell High Streets
- Access to the Northern and Victoria tube lines
- Chain-free

Council tax band C    EPC rating (null)







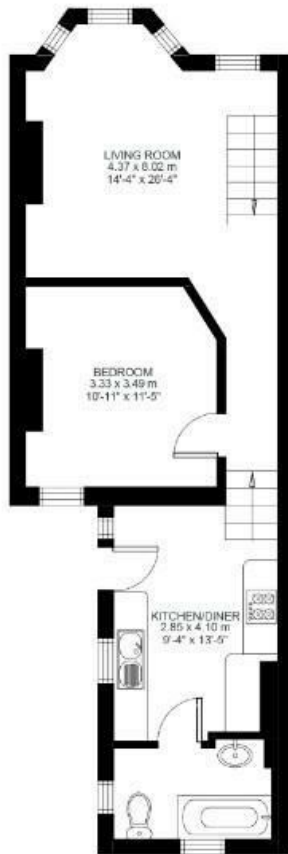
## 2 Bed flat

Approx internal area:

**774 sqft 72 sqm**

While we do try our very best, floor plans are produced as a guide only and we take no responsibility for the precise accuracy with which any property is represented

## Prideaux Road



First Floor



Second Floor





Prideaux Road, Brixton, SW9

