



**Arodene Road, Brixton, SW2**

**£625,000**

2 bedroom flat - conversion for sale

## Property Details

A split level, two-bedroom, two-bathroom apartment, occupying the top floors of a handsome Victorian terraced house, perfectly located in this leafy pocket of Brixton. With over 900 square feet of internal living space, this secure, top floor apartment offers generous proportions throughout and is split over various levels, amplifying the feeling of space and creating a light and airy atmosphere. The property has been lovingly renovated by the current owners, without distracting from the delightful period features, and really making the most of the abundance of natural light throughout. Situated on Arodene Road, an attractive residential road located within the Josephine Avenue Conservation Area, this popular street benefits from a quiet and sleepy setting. The property is only a short walk away from some of Brixton's most popular primary schools, the local amenities of vibrant Brixton Hill, the ever-popular Brockwell Park and the fantastic variety of nightlife and eateries on offer in central Brixton.

Council tax band D      EPC rating D (64)

## Features

- Two double bedrooms
- Victorian conversion
- Split over various levels
- Characterful features
- Over 900 square feet of internal living space
- Substantial loft storage
- Sought-after location, close to Brockwell Park
- Quiet residential street in the heart of the Josephine Avenue conservation area
- Chain-free





Arodene Road, Brixton, SW2

# K

## 2 Bed Flat

Approx internal area:

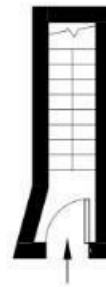
**913 sqft 85 sqm**

While we do try our very best, floor plans are produced as a guide only and we take no responsibility for the precise accuracy with which any property is represented

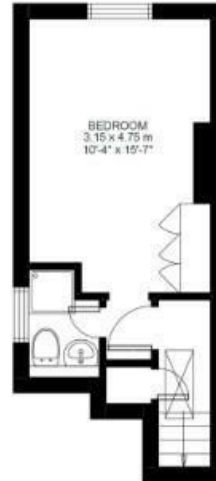
## Arodene Road



First Floor



Ground Floor



Second Floor





Arodene Road, Brixton, SW2

