



**Barnwell Road, Brixton, SW2**

2 bedroom flat - purpose built for sale

**£550,000**

Share of Freehold

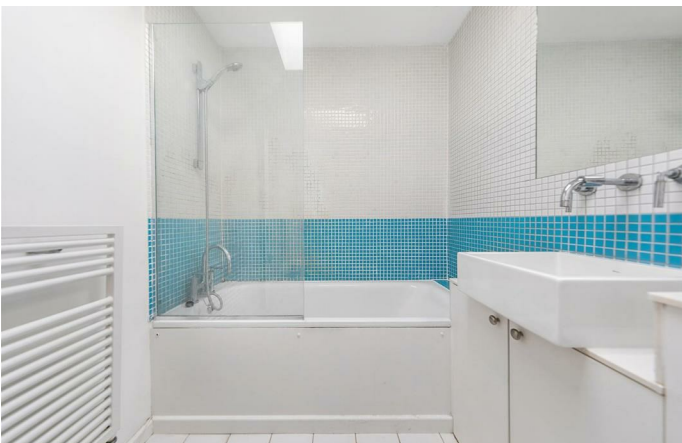
## Property Details

A fantastic two double bedroom, two bathroom split level flat in a modern build comprising of two apartments, situated on a highly sought-after street, ideally located in-between Brixton and Herne Hill. On the first floor, you are met with the first double bedroom, the wraparound floor to ceiling window creates a light and airy atmosphere, the en-suite bathroom is stylish, modern and fresh. On the second floor is the second double bedroom, with built-in storage and access to the private balcony, overlooking the back of the building. The open plan living space is a truly spectacular room, with some serious Wow Factor and an abundance of space for dining, relaxing and entertaining guests. The beautifully finished kitchen comes complete with integrated appliances and plenty of storage cupboards. Barnwell Road is a residential road which runs adjacent to the incredibly popular Poets' Corner, a highly desirable pocket of roads between Herne Hill and Brixton (approximately eight-minute walk to both). Brockwell Park (lauded as London's best outdoor space by locals with its famous lido built-in 1937) on your doorstep, and the delights of leafy Herne Hill in the opposite direction, it is easy to see why Barnwell Road is so loved.

Council tax band      EPC rating (null)

## Features

- Two double bedrooms
- Two bathrooms
- Modern Build comprising of two apartments
- Split over two floors
- Nearly 800 square feet of internal living space
- Sought-after road running parallel to Poet's Corner
- A short stroll to Brixton Village and Brockwell Park
- Share of freehold





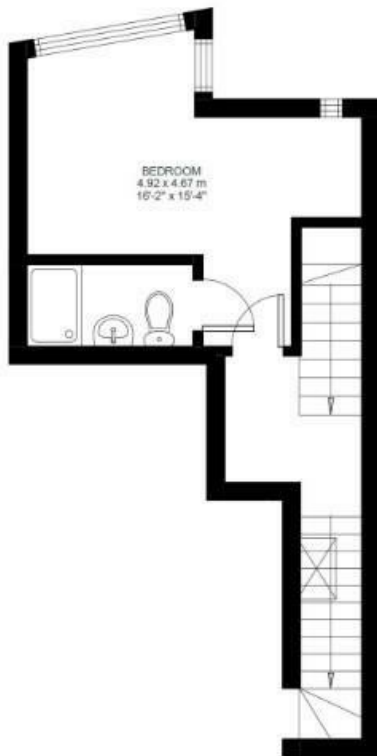
# Barnwell Road

## 2 Bed Flat

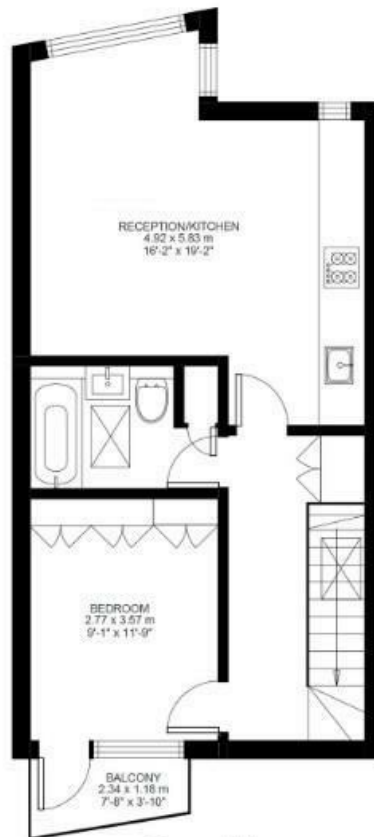
Approx internal area:

**790 sqft 73 sqm**

While we do try our very best, floor plans are produced as a guide only and we take no responsibility for the precise accuracy with which any property is represented



First Floor



Second Floor



Ground Floor



Barnwell Road, Brixton, SW2

