

**Branksome Road, Brixton, SW2**

**£500,000**

2 bedroom flat - conversion for sale

## Property Details

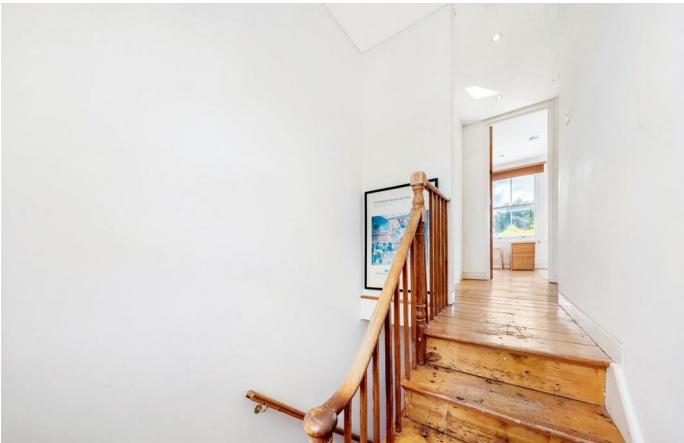
This beautifully presented two bedroom split-level conversion flat is equidistant to the High Streets in Brixton and Clapham. The flat boasts a spacious and naturally bright interior. The first floor comprises an integrated open plan kitchen/ reception with windows on both sides of the room, allowing plenty of light in. The hallway on the top floor offers ample storage space, as does the first double room to the front of the property. The two bedrooms are separated by a well-designed modern bathroom. As far as locations go, it doesn't get much better: equidistant from two sought-after areas, attracting purchasers contemplating moving to both Brixton and Clapham. Brixton is situated within a nine-minute walk, with super-fast links to Central London, the ever-popular Brixton Village and the green open spaces of Brockwell Park. Within a ten minute walk in the other direction is all that Clapham has to offer, with transport links including Clapham High Street station, Clapham Common and Clapham North tube stations.

## Features

- Two double bedrooms
- Victorian conversion
- Bright and airy atmosphere throughout
- Split over two floors
- Nearly 650 square feet of internal living space
- Popular location within a ten-minute walk to Brixton and Clapham High Streets
- Access to the Northern and Victoria tube lines
- Chain-free

Council tax band D    EPC rating C (69)







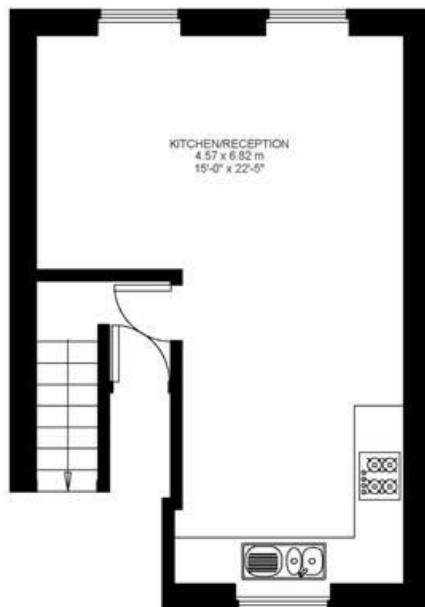
## Branksome Road

2 Bed flat

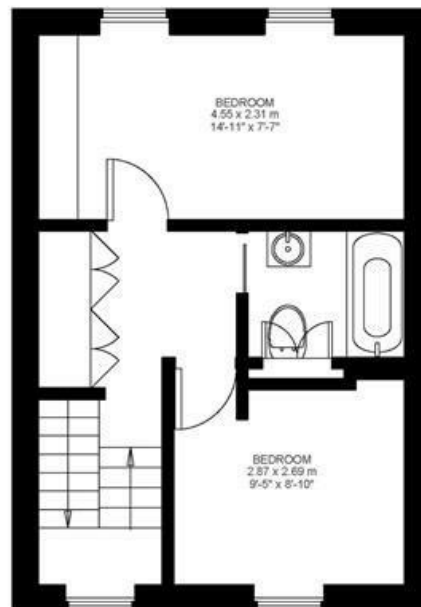
Approx internal area:

**644 sqft 60 sqm**

While we do try our very best, floor plans are produced as a guide only and we take no responsibility for the precise accuracy with which any property is represented



First Floor



Second Floor





Branksome Road, Brixton, SW2

