



Wimbart Road, Brixton, SW2

£550,000

2 bedroom flat - conversion for sale

Property Details

A characterful two-bedroom, two-bathroom flat with a well maintained South-East facing garden and a bright and airy open-plan living space. Wimbart Road is a popular quiet residential street, perfectly positioned within close proximity to the wonderful greenery of Brockwell Park, and all that central Brixton has to offer. This beautiful, double glazed Victorian garden flat has been tastefully decorated throughout, with care and attention to detail, making use of all available living space to create a stunning apartment that feels like a home, the moment you walk through the door. Wimbart Road is situated a fifteen-minute stroll to the culinary and nightlife mecca of South London, Brixton, and a five minute walk to Brockwell Park. A fifteen-minute walk across the park brings you to Herne Hill station and the many pubs, cafes and restaurants of Herne Hill.

Features

- Two double bedrooms
- Two bathrooms
- Victorian conversion
- Characterful features
- South-facing private garden
- Quiet residential street
- Ten-Fifteen minute walk to Brixton tube station
- Walking distance to Brockwell park

Council tax band EPC rating D (58)





Wimbart Road, Brixton, SW2



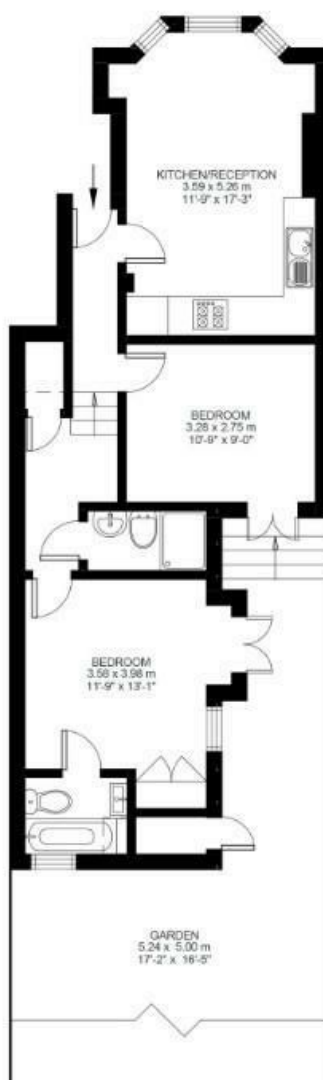
2 Bed Flat

Approx internal area:

564 sqft 52 sqm

While we do try our very best, floor plans are produced as a guide only and we take no responsibility for the precise accuracy with which any property is represented

Wimbart Road



Ground Floor



Wimbart Road, Brixton, SW2

