



**Lowden Road, Herne Hill, SE24**

2 bedroom flat - conversion for sale

**£735,000**

Share of Freehold

## Property Details

This is a wonderful two/three double bedroom, split-level maisonette, in a pretty residential road in a popular residential pocket between Brixton, Herne Hill and Loughborough Junction. This apartment occupies the ground two floors of a grand period building with a lovely Victorian façade and overlooks the park opposite. The property is entered through a private entrance and has nearly 1100 square feet of internal living space. The property is currently configured as a two-bedroom maisonette with a separate kitchen and dining room at the back of the building with two bedrooms and a lovely separate reception room. Configured as a three-bedroom maisonette the room at the front of the building could easily act as a bedroom with an open plan reception and kitchen at the rear. This flexibility is a fantastic selling point, allowing the layout to be altered depending on the purchaser's search parameters. The apartment is ideally located close to Herne Hill and minutes from the increasingly popular Loughborough Junction and a stone's throw from Ruskin Park.

## Features

- Two/Three double bedrooms
- Victorian conversion
- Characterful features
- Nearly 1100 square feet of internal living space
- Split over two floors
- Private garden at the rear and overlooking the park at the front
- Short walk to Ruskin Park
- Herne Hill station within a ten minute stroll
- Share of freehold

Council tax band      EPC rating E (51)









Lowden Road, Herne Hill, SE24

**K**

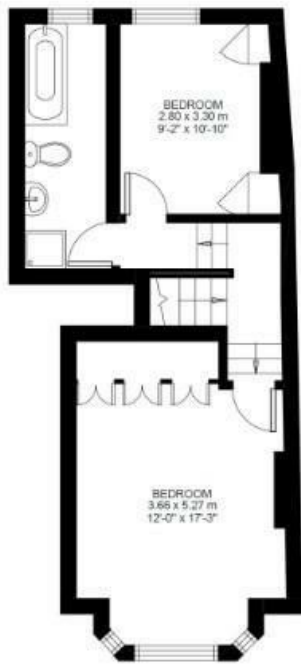
Lowden Road

2/3 Bed Flat

Approx internal area:

**1095 sqft 102 sqm**

While we do try our very best, floor plans are produced as a guide only and we take no responsibility for the precise accuracy with which any property is represented



Raised Ground Floor



Lower Ground Floor





Lowden Road, Herne Hill, SE24

