



Lyham Road, Brixton, SW2

3 bedroom flat - conversion for sale

£699,950

Share of Freehold

Property Details

A three double bedroom, split-level apartment in a converted Victorian townhouse, flooded with natural light throughout and perfectly positioned between Clapham and Brixton. This bright and airy home has been cared for and refurbished over a number of years by the current owners, resulting in a property that truly feels like a home, the moment you walk through the door. With over 1100 square feet of living space on offer, three genuine double bedrooms and two bathrooms, the property is a rare find and is sure to tick boxes for a wide range of purchasers. The property is split over the top floors of a handsome Victorian terrace and is located in a popular residential pocket, equidistant to Brixton and Clapham, appealing to purchasers who are contemplating moving to both of these sought-after areas.

Council tax band D

EPC rating D (61)

Features

- Three double bedrooms
- Two bathrooms
- Victorian conversion
- Characterful features
- Split over multiple floors
- Over 1100 square feet of internal living space
- Popular location equidistant to Brixton and Clapham High Streets
- Walking distance to the Victoria and Northern tube lines
- Chain-free
- Share of freehold





Lyham Road

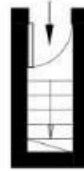
3 Bed Flat

Approx internal area:

1116 sqft 104 sqm

(EXCLUDING EAVES STORAGE)
EAVES STORAGE 6.28 SQ.M / 68 SQ.FT
INCLUSIVE TOTAL AREA 110.28 SQ.M / 1187 SQ.FT

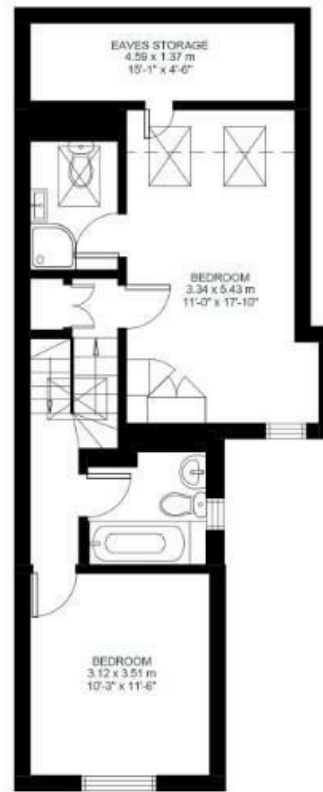
While we do try our very best, floor plans are produced as a guide only and we take no responsibility for the precise accuracy with which any property is represented



Ground Floor



First Floor



Second Floor



Lyham Road, Brixton, SW2

