



**Sudbourne Road, Brixton, SW2**

2 bedroom flat for sale

**£750,000**

Share of Freehold

## Property Details

A rare example of a two double bedroom South-facing garden flat, on a particularly sought after road (fought over for catchment rights to Sudbourne and Corpus Christi Schools). This lovely home, nestled on sleepy Sudbourne Road, has been tastefully extended and lovingly cared for by its current owners, and boasts 1000 square feet of internal living space, making it a fantastic option when compared to other period garden flats on offer in terms of size and layout. Sudbourne Road is a quiet and peaceful residential street, located between vibrant Brixton Hill and trendy Acre Lane, a ten-minute walk to the centre of Brixton and all that the area has to offer. In the other direction, purchasers will also benefit from everything that Clapham has to offer within a fifteen-minute walk: the multitude of restaurants and bars, and excellent transport links with two Northern Line underground stations; Clapham Common and Clapham North tube stations.

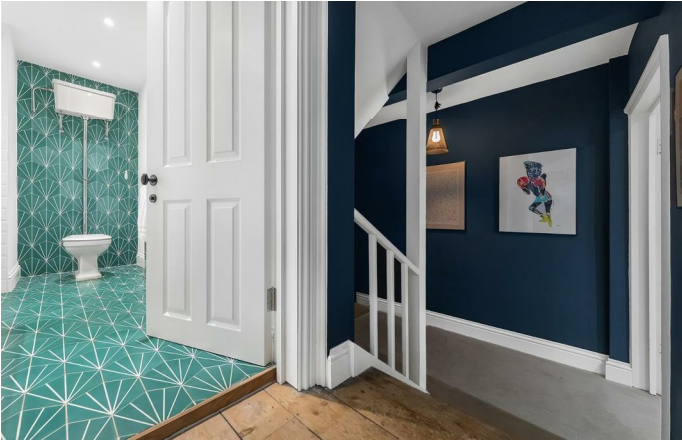
## Features

- Two double bedrooms
- Victorian conversion
- Characterful features
- Over 1000 square feet of internal living space
- South-facing private garden
- Sought-after quiet residential street
- Close proximity to two outstanding primary schools
- Walking distance to Brixton and Clapham High Streets
- Access to the Northern and Victoria tube lines

Council tax band

EPC rating D (59)







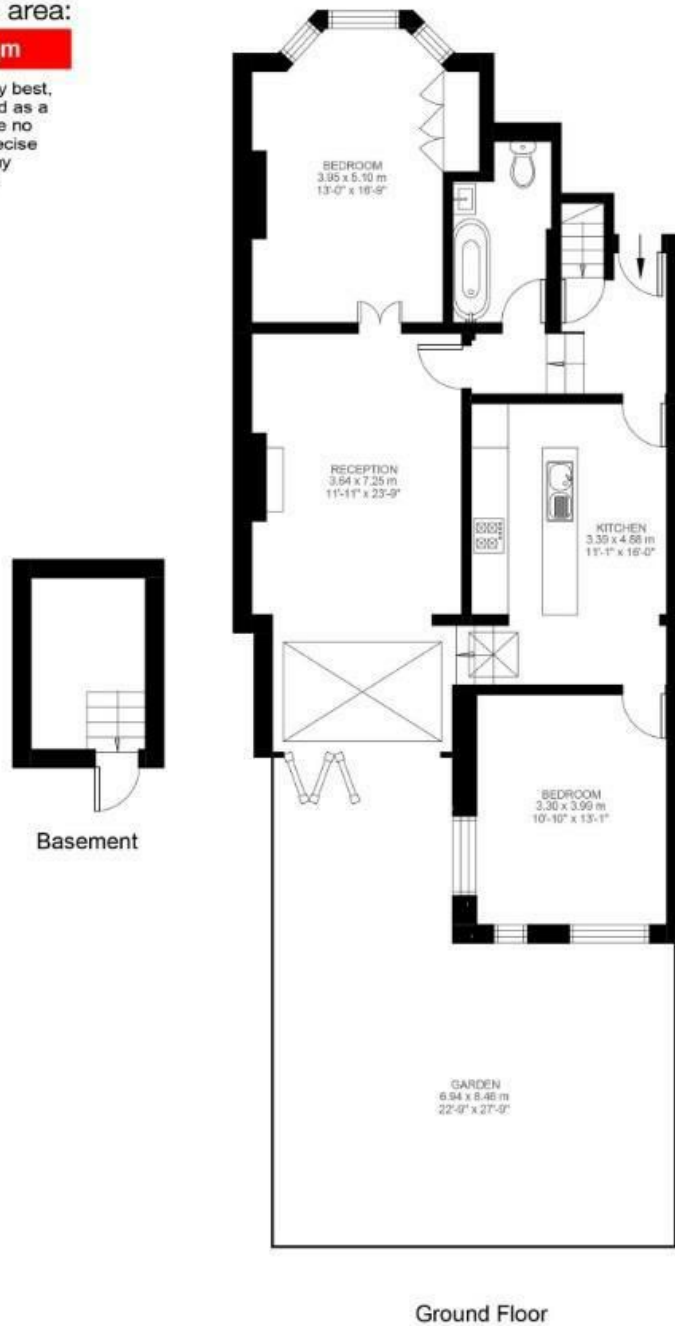
## Sudbourne Road

### 2 Bedroom Flat

Approx internal area:

**1010 sqft 94 sqm**

While we do try our very best, floor plans are produced as a guide only and we take no responsibility for the precise accuracy with which any property is represented



Sudbourne Road, Brixton, SW2

