



Holmewood Gardens, Brixton, SW2

4 bedroom house - terraced for sale

£1,025,000

Freehold

Property Details

A beautiful Victorian four-bedroom house, situated in the extremely popular residential pocket of Holmewood Gardens, a short stroll from Brixton Hill. Holmewood Gardens is a quiet residential street which surrounds a pretty garden square and is within a fifteen to seventeen-minute walk to Brixton town centre, or a few minutes if you were to jump on one of the many buses that flow down Brixton Hill. The property has been lovingly cared for by the current owners and is a light and airy mix of contemporary design and characterful features which include; period fireplaces, coving and Victorian tiling in the hallways. With acres of room, three/four bedrooms and leafy views across the park opposite, it is hard to remind yourself that you are indeed first stop on the Victoria line in Brixton, located within close proximity to central London. The total square footage is large and allows potential purchasers to alter the layout to best suit their own lifestyle. Subject to permission there is the opportunity to increase the footprint by altering the un-converted loft.

Features

- Four bedrooms
- Victorian house
- Characterful features
- Over 1700 square feet of internal living space
- Substantial loft space and development potential
- Cellar and additional built-in storage
- Overlooking the park
- Sought-after residential street surrounding a garden square
- Freehold

Council tax band EPC rating (null)





Holmewood Gardens, Brixton, SW2



Holmewood Gardens

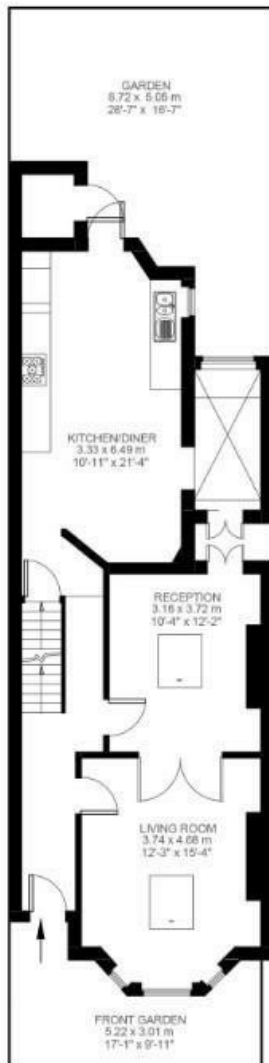
4 Bedroom House

Approx internal area:

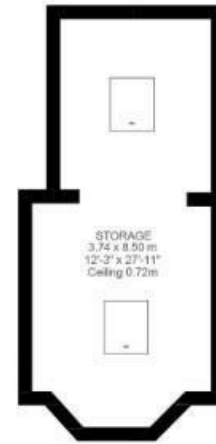
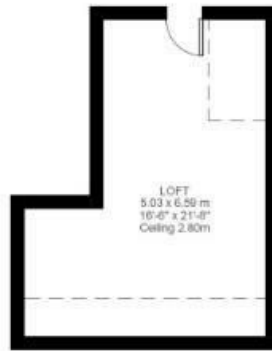
1725 sqft 160 sqm

(EXCLUDING STORAGE)
STORAGE 64.94 SQ.M / 699 SQ.FT
INCLUSIVE TOTAL AREA 224.94 SQ.M / 2421 SQ.FT

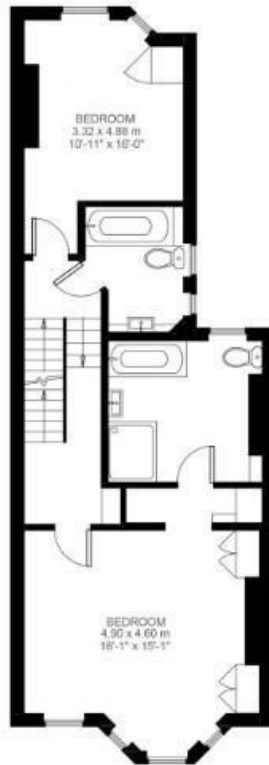
While we do try our very best, floor plans are produced as a guide only and we take no responsibility for the precise accuracy with which any property is represented



Ground Floor



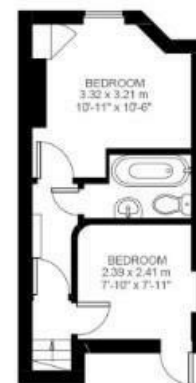
Lower Ground Storage



First Floor



Basement



Second Floor



Holmewood Gardens, Brixton, SW2

