



**Trinity Gardens, Brixton, SW9**

**£475,000**

2 bedroom flat - purpose built for sale

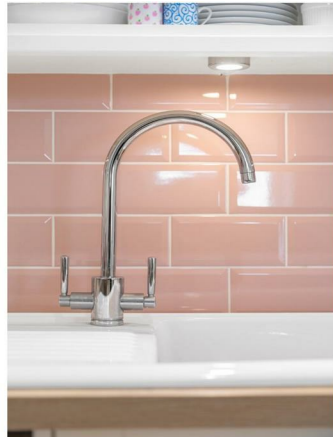
## Property Details

We are delighted to offer this stunning, two double bedroom flat on the top floor of a secure modern development situated between Brixton and Clapham town centres. The development is well maintained with access to a lift and a convenient bike storage area for keen cyclists who can make the short, twenty-minute bike ride into London's central district. The living space is open plan with ample space for a large living area, room for a dining table and a contemporary kitchen. Both the bedrooms are double rooms and flooded with light from large-pane windows, glazed to the highest modern energy standards. A comfortable square footage of 613 square feet, coupled with the wide hallways, all add to the light and airy feel throughout. The property has a modern bathroom and this flat is perfect for anyone who wants to have the advantages of having everything on their doorstep but also tucked away in a quiet development.

## Features

- Two double bedrooms
- Secure modern development
- Tastefully decorated throughout
- Over 600 square feet of internal living space
- Communal lift and CCTV
- Bike storage
- Sought-after residential street close to Brixton tube station
- Walking distance to the Victoria and Northern tube lines
- Chain-free

Council tax band      EPC rating (null)





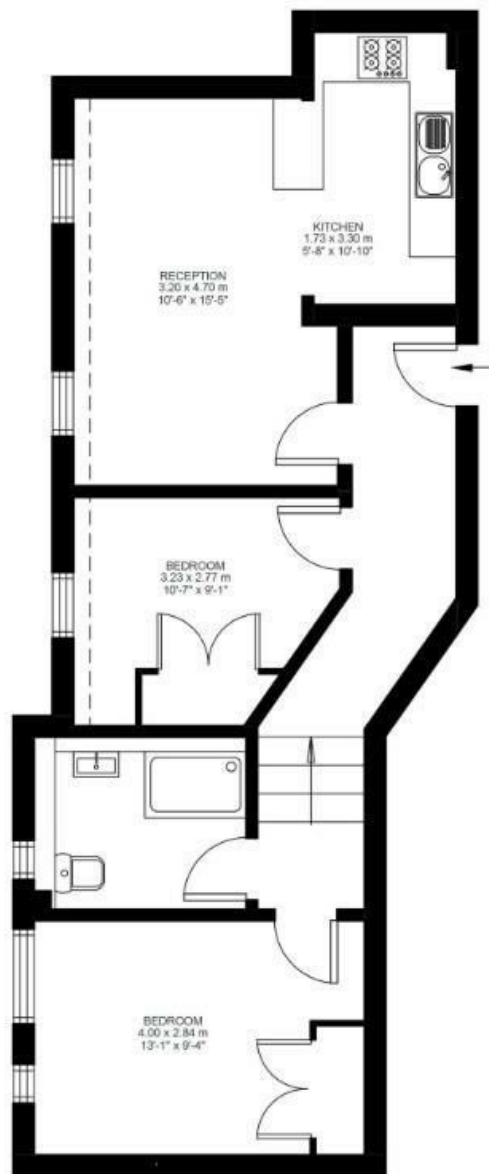
## Trinity Gardens

### 2 Bed Flat

Approx internal area:

**613 sqft 57 sqm**

While we do try our very best, floor plans are produced as a guide only and we take no responsibility for the precise accuracy with which any property is represented



Second Floor



Trinity Gardens, Brixton, SW9

