

Medora Road, Brixton, SW2

2 bedroom flat - conversion for sale

£595,000

Share of Freehold

Property Details

An immaculately presented, two double bedroom flat with a sunny garden on Medora Road, perfectly positioned close to Brockwell Park and all that central Brixton has to offer. This charming Victorian garden flat has been renovated throughout, with care and attention to detail and the layout is versatile. The two bedrooms are both genuine doubles and share a luxurious family bathroom with tasteful tiling. Tucked away to the rear of the flat, the open-plan reception room is an inviting space. This superb living area has been extended and there is plenty of space in which to relax, dine and entertain guests. The sleek, gloss kitchen is contemporary, providing plenty of storage and surface space, integrated appliances, a sociable breakfast bar, and trendy exposed brickwork. The room enjoys an abundance of natural light thanks to a glass roof and double patio doors which allow a seamless transition into the spacious, South-East facing private garden.

Features

- Two double bedrooms
- Victorian conversion
- Bright and airy atmosphere throughout
- Exposed brickwork and concertina doors
- Private South-East facing garden
- Quiet residential street within a fifteen minute walk to Brixton tube station
- Brockwell Park is five-minutes away
- Share of freehold

Council tax band EPC rating D (60)





Medora Road, Brixton, SW2

K

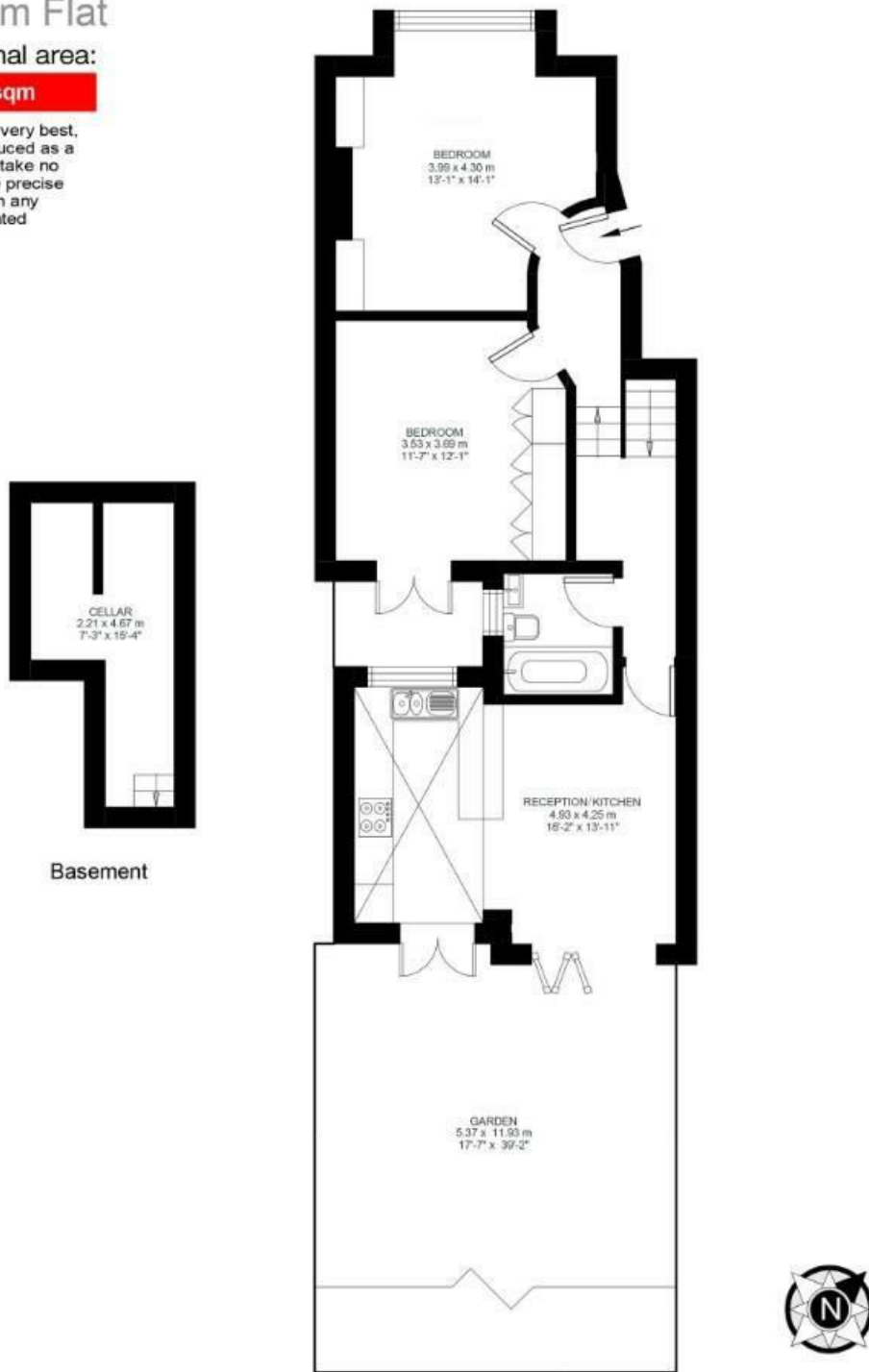
Medora Road

2 Bedroom Flat

Approx internal area:

726 sqft 67 sqm

While we do try our very best, floor plans are produced as a guide only and we take no responsibility for the precise accuracy with which any property is represented



Ground Floor

Medora Road, Brixton, SW2

