

Chaucer Road, Herne Hill, SE24

£500,000

1 bedroom flat - conversion for sale

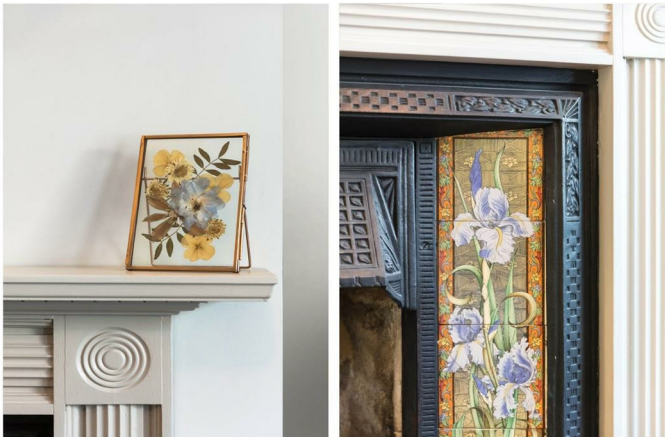
Property Details

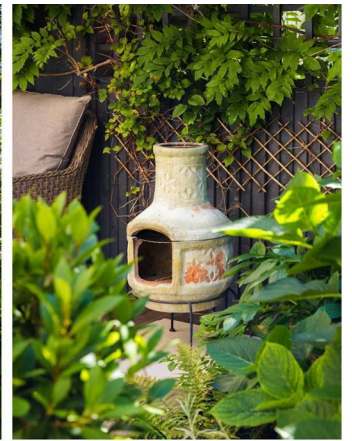
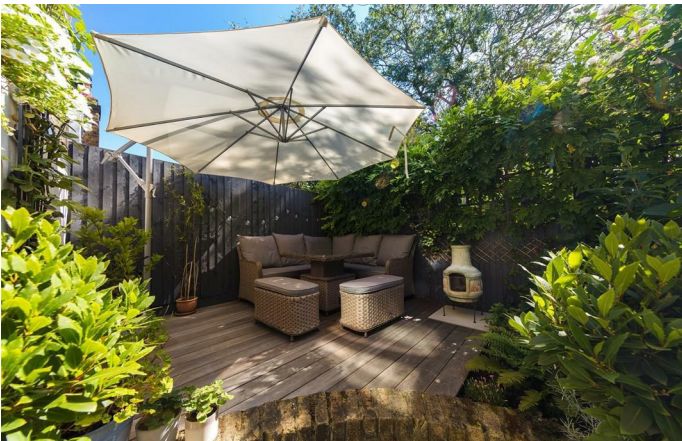
A beautifully presented, one double bedroom garden flat nestled on Chaucer Road in the heart of Poets' Corner, a highly desirable pocket of residential roads between leafy Herne Hill and vibrant Brixton. Accessed via its own front door, the property has been finished to an immaculate standard, a light and airy mix of period features and contemporary design. The living space is lovely, with a spacious reception room to the front of the property, benefitting from bright bay window that overlooks the pretty, leafy street. Tucked away quietly to the rear of the flat, the double bedroom is a generous size and boasts ample built-in storage options, and is adjacent to the luxurious, recently fitted bathroom. There is a sleek separate kitchen, with a high standard of fittings that promote a tasteful, elegant atmosphere, whilst integrated appliances, plenty of worktop space and well-designed units offer real practicality as well as style. The icing on the cake is the delightful garden - a true oasis of calm and the ideal spot in which to escape the hustle and bustle of city living, or entertain guests during the warmer months of the year.

Council tax band EPC rating (null)

Features

- One double bedrooms
- Victorian conversion
- Characterful features
- Bright and airy atmosphere throughout
- Nearly 550 square feet of internal living space
- Private South-East facing garden
- Extremely popular road in Poets Corner
- Brockwell Park at the end of the road
- Chain-free.







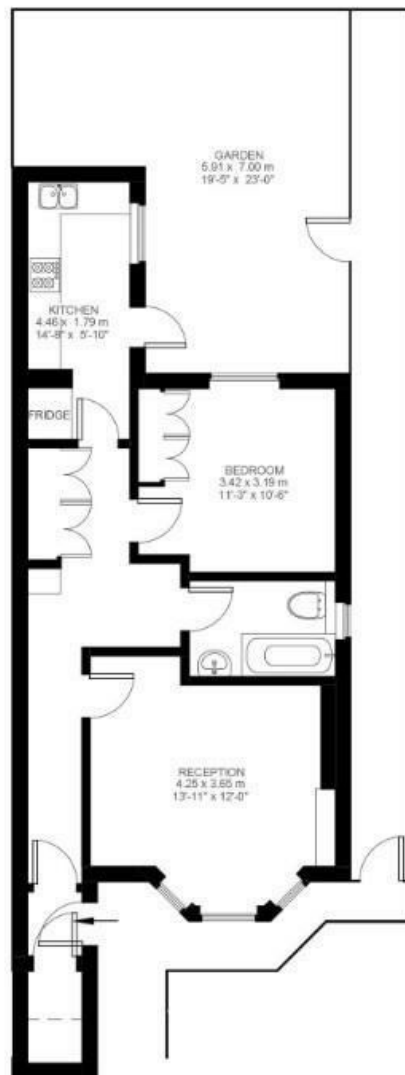
Chaucer Road

1 Bedroom Flat

Approx internal area:

572 sqft 53 sqm

While we do try our very best, floor plans are produced as a guide only and we take no responsibility for the precise accuracy with which any property is represented



Chaucer Road, Herne Hill, SE24

