



Norwood Road, Herne Hill, SE24

1 bedroom flat - conversion for sale

£375,000

Share of Freehold

Property Details

A charming one double bedroom top floor flat in a grand Victorian converted townhouse with fantastic views across the green open spaces of Brockwell Park. The property comprises a separate living room with wooden flooring, high ceilings and a sash window which allows natural light to flood into the property. With ample space to relax and dine, the reception room will be used on a regular basis. A well-appointed separate modern kitchen leads off a central bright hallway and the bedroom is a comfortable double room with tranquil views out over Brockwell Park. A fresh and contemporary bathroom complete the rooms within this characterful one double bedroom apartment. The property is conveniently located opposite Brockwell Park, one of South London's popular hotspots. The pubs and restaurants in Herne Hill, the Sunday market, and the train station are all on your doorstep. In the other direction you have all the amenities on offer in Tulse Hill with fantastic transport links into central London.

Features

- One double bedroom
- Victorian conversion
- Characterful features
- Nearly 500 square feet of internal living space
- Set back quietly from the road
- Overlooking Brockwell Park
- Walking distance to Herne Hill and Tulse Hill stations
- Share of freehold

Council tax band EPC rating D (64)



Norwood Road, Herne Hill, SE24



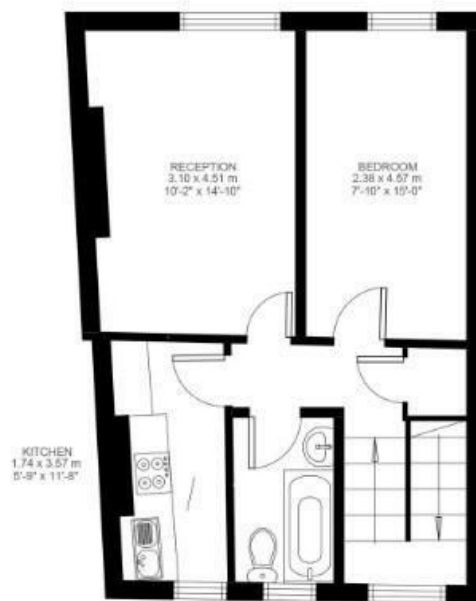
1 Bedroom Flat

Approx internal area:

482 sqft 45 sqm

While we do try our very best, floor plans are produced as a guide only and we take no responsibility for the precise accuracy with which any property is represented

Norwood Road



Third Floor



Second Floor



Norwood Road, Herne Hill, SE24

