



**Sulina Road, Brixton, SW2**

2 bedroom flat - conversion for sale

**£450,000**

Freehold

## Property Details

This is a delightful two bedroom split level flat occupying the top two floors of a Victorian terrace house. Sulina Road is nestled in a popular residential pocket, highly sought after for its character, feel and proximity to amenities in Brixton, Clapham, and Streatham Hill. All three areas are easily accessible, within a fifteen to nineteen-minute walk. The property comprises a bright front reception room with a feature fireplace, high ceilings and large sash windows, a separate eat-in kitchen with plenty of cupboard space and a large family bathroom with a walk-in shower. Both bedrooms are good size doubles, on the top floor of this property is the larger of the two bedrooms with large eaves storage, Velux windows and a quirky brickwork feature wall. This property is perfect for potential purchasers wanting to move in straight away and furnish to their taste.

## Features

- Two double bedrooms
- Victorian conversion
- Split-level apartment
- 870 square feet of internal living space
- Ideally located between Brixton, Clapham, Balham and Streatham Hill High Streets
- Leasehold plus Freehold to the entire building
- Chain-free

Council tax band      EPC rating D (63)



# Sulina Road



## 2 Bed Flat

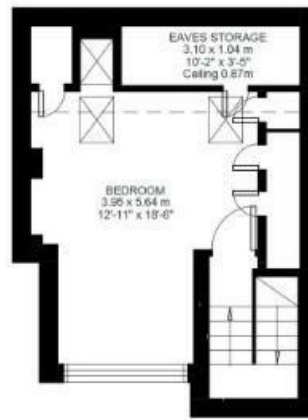
Approx internal area:

**870 sqft 81 sqm**

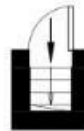
While we do try our very best, floor plans are produced as a guide only and we take no responsibility for the precise accuracy with which any property is represented



First Floor



Second Floor



Ground Floor



Sulina Road, Brixton, SW2

