



Sudbourne Road, Brixton, SW2

5 bedroom house for sale

£1,250,000

Freehold

Property Details

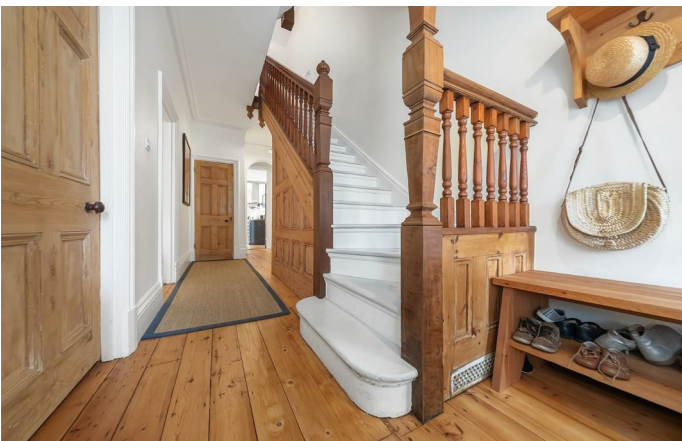
An impressive example of a five-bedroom, three-bathroom family home, this beautiful, Arts and Crafts house on Sudbourne Road is perfectly located, just a short stroll away from Brixton's amenities and transport links. Sudbourne Road is a sleepy, residential road, highly sought-after for its proximity to both Brixton and Clapham and fought over for catchment rights to Sudbourne and Corpus Christi Primary Schools. This is a truly stunning home, which could be moved into stress-free, benefiting from the hard work that has been completed to extend and renovate and resulting in the perfect mix of original features and tasteful, modern design. With a larger than average square footage, five bedrooms, three luxurious bathrooms and a secluded garden to match, it is hard to remind yourself that you are indeed in the heart of Brixton, located on this desirable street. The property is a short ten-minute stroll tube and rail stations. At the end of the road is vibrant Brixton Hill and its brilliant array of cafes, pubs and restaurants, such as F Mondays, Pizza Brixton, and the White Horse pub, to name a few. Brockwell Park is also within a ten-minute stroll. In the other direction, purchasers will also benefit from everything that Clapham has to offer within a fifteen-minute walk.

Features

- Five double bedrooms
- Three bathrooms
- Over 2200 square feet of internal living space
- Two outstanding primary schools within close proximity
- Characterful features
- Extremely popular quiet residential street between Brixton and Clapham
- Access to the Victoria and Northern tube lines
- Brockwell Park is seven-ten minute walk away
- Victorian freehold house

Council tax band

EPC rating (null)





Sudbourne Road, Brixton, SW2



Sudbourne Road

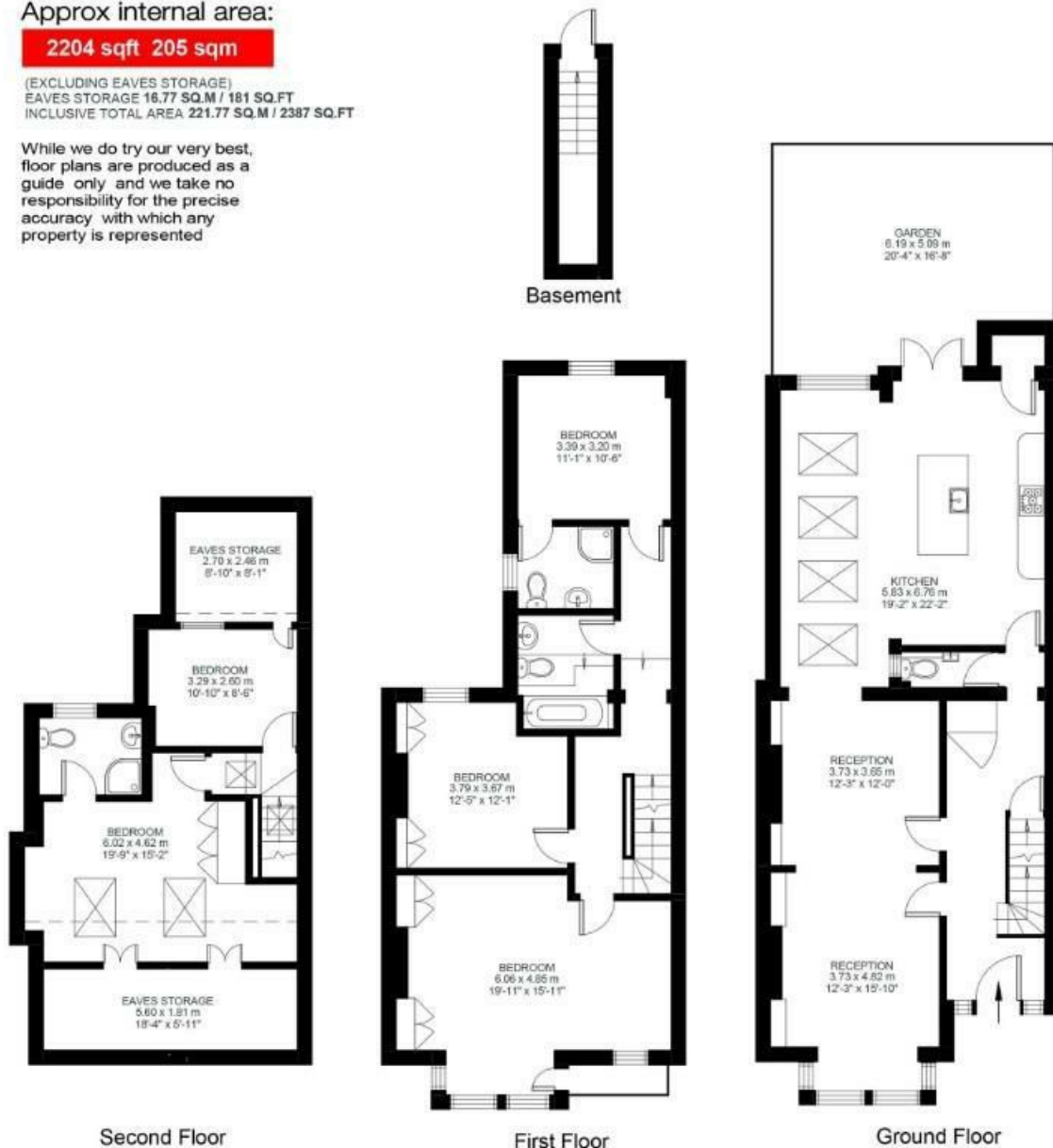
5 Bed House

Approx internal area:

2204 sqft 205 sqm

(EXCLUDING EAVES STORAGE)
EAVES STORAGE 16.77 SQ.M / 181 SQ.FT
INCLUSIVE TOTAL AREA 221.77 SQ.M / 2387 SQ.FT

While we do try our very best,
floor plans are produced as a
guide only and we take no
responsibility for the precise
accuracy with which any
property is represented



Sudbourne Road, Brixton, SW2

