



**Kings Avenue, Clapham, SW4**

2 bedroom flat - purpose built for sale

**£725,000**

Share of Freehold

## Property Details

An impressive two double bedroom apartment with over 1100 square feet of internal living space, between the amenities in Clapham and Brixton. Queenswood Court is perfectly located, set back from Kings Avenue and equidistant to both of these popular neighbourhoods. With the charming Abbeville Village also within a few minutes' walk, the location cannot be understated. The apartment is located on the top floor of this grand and imposing period mansion block, and with such a generous square footage, purchasers will be hard-pressed to find many flats that boast such great dimensions. The apartment benefits from an abundance of storage throughout and access to substantial loft space. Further benefits include off-street parking for two vehicles to the front of the building, plus the huge bonus of a large private garage to the rear - perfect for further parking if required or indeed for some additional secure storage. The flat is beautifully presented by the current owners, a light and airy mix of contemporary design and tasteful themes and colourways. The modern, double-glazed crittall windows keep the property insulated to the highest of modern standards whilst adding some great character.

Council tax band      EPC rating (null)

## Features

- Two double bedrooms
- Two bathrooms
- Period mansion block
- Characterful features
- 1100 square feet of internal living space
- Access to loft space
- Off-street parking and a private garage
- Equidistant to Clapham and Brixton High Streets
- Short walk to Abbeville Village
- Share of freehold





Kings Avenue, Clapham, SW4

# K

## Kings Avenue

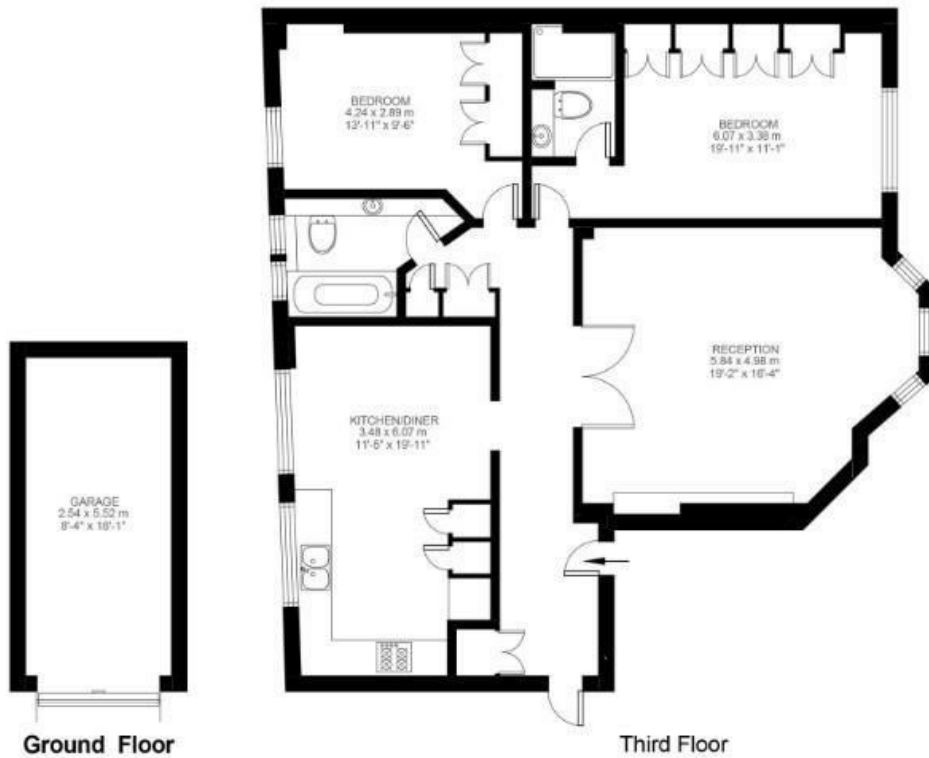
### 2 Bedroom Flat

Approx internal area:

**1110 sqft 103 sqm**

**EXCLUDING GARAGE**

While we do try our very best, floor plans are produced as a guide only and we take no responsibility for the precise accuracy with which any property is represented



Kings Avenue, Clapham, SW4

