



Kellett Road, Brixton, SW2

£475,000

2 bedroom flat - conversion for sale

Property Details

A well-presented two double bedroom, first floor flat in an attractive Victorian terrace, on one of Brixton's most sought-after streets, Kellett Road. A bright and airy open-plan reception room runs across the front of the building with ample room to relax and dine. The reception is flooded with natural light through a bright bay window, whilst the modern kitchen has all you need in terms of storage and worktop space. Two double bedrooms share a stylish, contemporary bathroom off a central, split-level entrance hall. The master bedroom is a comfortable double room, tucked away at the rear of the property, with views out over the neighbouring gardens. The second bedroom is perfect for anyone looking to rent to a sharer, use as a guest room, study or nursery etc. Vibrant and bustling Brixton Village is just around the corner, but the property feels like a million miles away on these quiet, attractive streets. The green open spaces of Brockwell Park are also close-by.

Features

- Two double bedrooms
- Victorian conversion
- Bright and airy atmosphere throughout
- Nearly 500 square feet of internal living space
- Sought-after quiet residential street
- Moments from Brixton tube station and Brixton Village
- Close to Brockwell Park

Council tax band C EPC rating (null)



Kellett Road, Brixton, SW2

Kellett Road

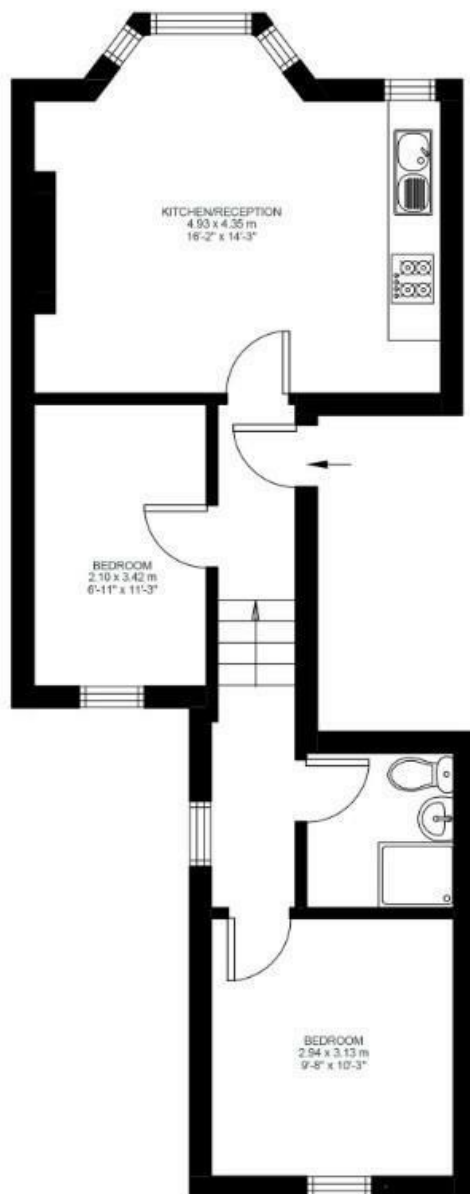
K

2 Bed Flat

Approx internal area:

495 sqft 46 sqm

While we do try our very best, floor plans are produced as a guide only and we take no responsibility for the precise accuracy with which any property is represented



First Floor



Kellett Road, Brixton, SW2

