



**Mauleverer Road, Brixton, SW2**

4 bedroom house for sale

**£1,100,000**

Freehold

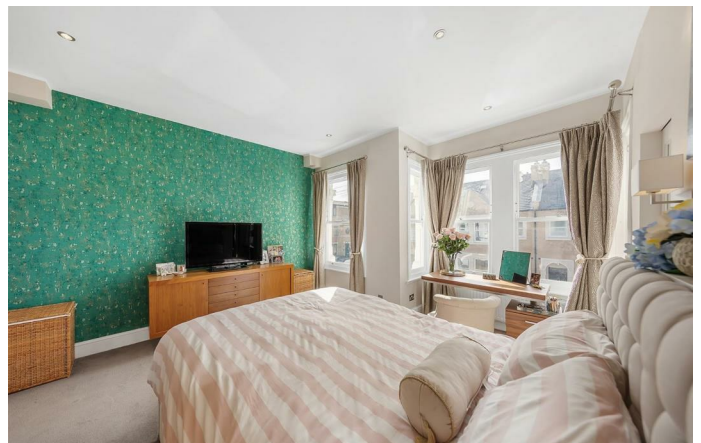
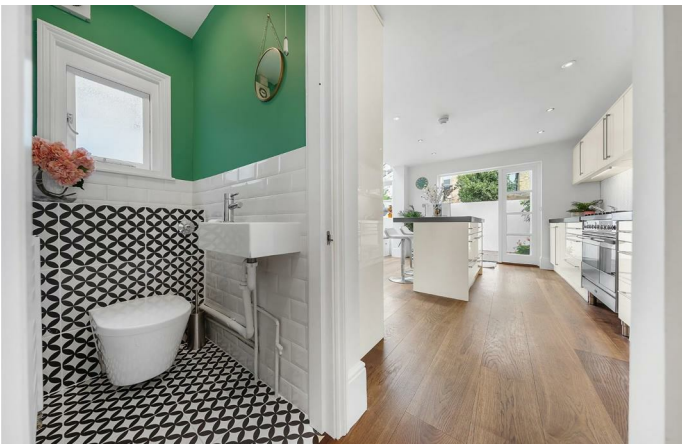
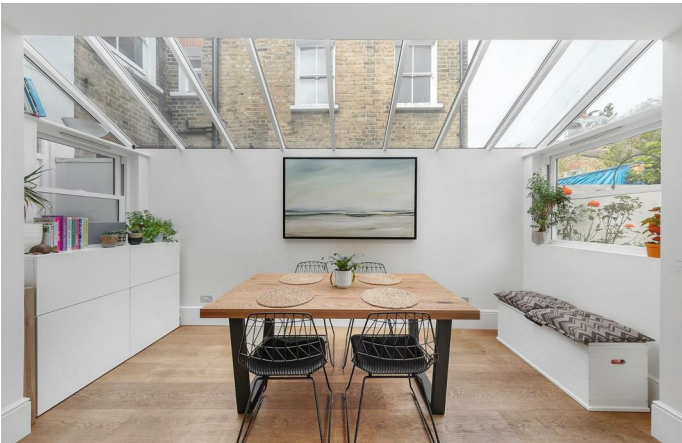
## Property Details

A stylish and well-located four double bedroom, two bathroom Victorian terraced house, located on a quiet and sleepy street sandwiched between Clapham and Brixton. Mauleverer Road is located in a popular residential pocket of pretty Victorian terraces, equidistant to both sought-after locations, and will appeal to purchasers who are contemplating moving to the two areas. This property has been modernised and extended, whilst maintaining great sensitivity to the charm of this period. With over 1600 square feet of internal living space, this family home is beautifully light and airy with a contemporary finish, ample built-in storage, and ideal for any purchasers looking to move into a new house hassle-free. The cafes, bars and restaurants of up-and-coming Acre Lane are easily accessible, with local heroes such as Boqueria Tapas, The Beast of Brixton, and Blank Coffee, to name a few, all on the doorstep. Within a further few minutes' walk down the road purchasers will find themselves in the heart of Brixton, with Brixton Village, POP Brixton, The Ritzy cinema and the legendary Brixton Academy all at their fingertips. In the other direction, vibrant and diverse Clapham High Street offers cracking nightlife and culinary delights.

## Features

- Four double bedrooms
- Two bathrooms
- Victorian
- Mix of characterful features and contemporary design
- Over 1600 square feet of internal living space
- Quiet residential street within a ten-minute walk to Brixton and Clapham
- Access to the Victoria and Northern tube lines
- Freehold

Council tax band      EPC rating D (62)





Mauleverer Road, Brixton, SW2



## Mauleverer Road

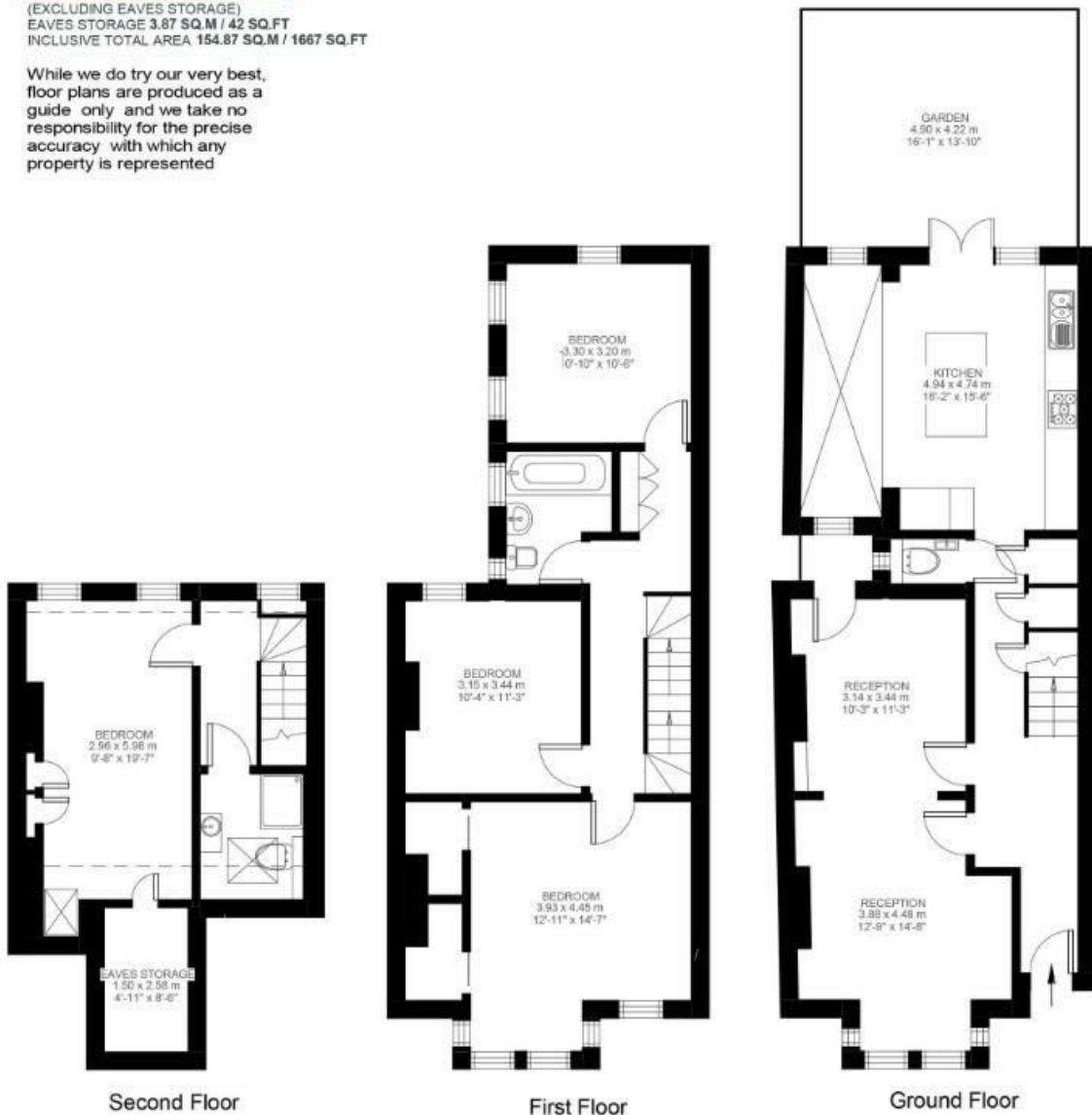
### 4 Bedroom House

Approx internal area:

**1628 sqft 151 sqm**

(EXCLUDING EAVES STORAGE)  
EAVES STORAGE 3.87 SQ.M / 42 SQ.FT  
INCLUSIVE TOTAL AREA 154.87 SQ.M / 1667 SQ.FT

While we do try our very best, floor plans are produced as a guide only and we take no responsibility for the precise accuracy with which any property is represented



Mauleverer Road, Brixton, SW2

