



Saltoun Road, Brixton, SW2

£425,000

1 bedroom flat - conversion for sale

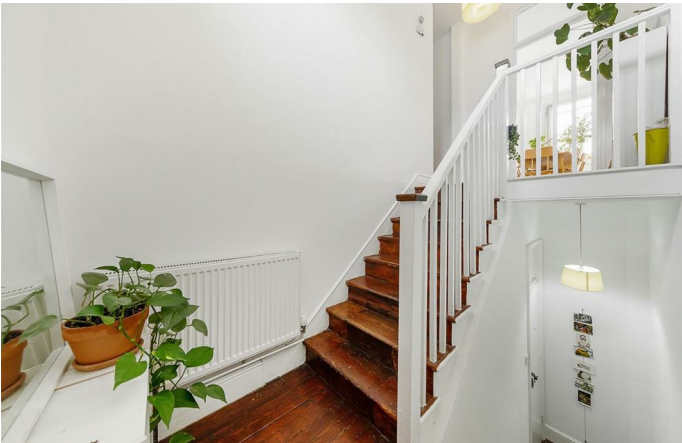
Property Details

This is a delightfully arranged, split level, one double bedroom flat occupying the top floor of one of the sought after Victorian terraced houses on Saltoun Road. The living space is lovely - a bright and airy separate reception room sits at the front of the flat, with sash windows, high ceilings, and bespoke shelving. There is plenty of space for a large dining table - perfect for those who enjoy entertaining guests on a regular basis. The separate galley kitchen is just across the hallway and provides all you may need in terms of storage and worktop space, overlooking the neighbouring rear gardens. The recently-fitted bathroom is tastefully finished, with trendy metro tiling. Last but not least, up a flight of stairs is the generous double bedroom, boasting some spacious built-in storage. With nearly 700 square feet of internal living space, the flat offers great dimensions, and being split over various levels really amplifies the sense of space throughout. This Victorian conversion is nestled in a popular residential pocket, highly sought after for its character, feel and proximity to Brixton High Street, Brockwell Park and Herne Hill.

Features

- One double bedroom
- Victorian conversion
- Characterful features
- Split over two floors
- Nearly 700 square feet of internal living space
- Located in the heart of Brixton, moments from the tube station
- Brixton Village is a three-minute walk
- Brockwell Park is a five-minute stroll

Council tax band EPC rating D (65)



Saltoun Rd

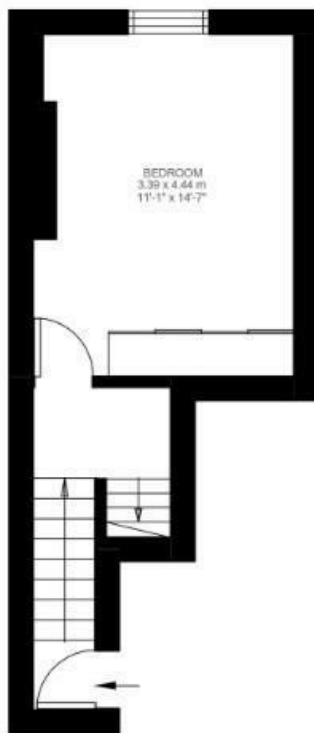


1 Bedroom Flat

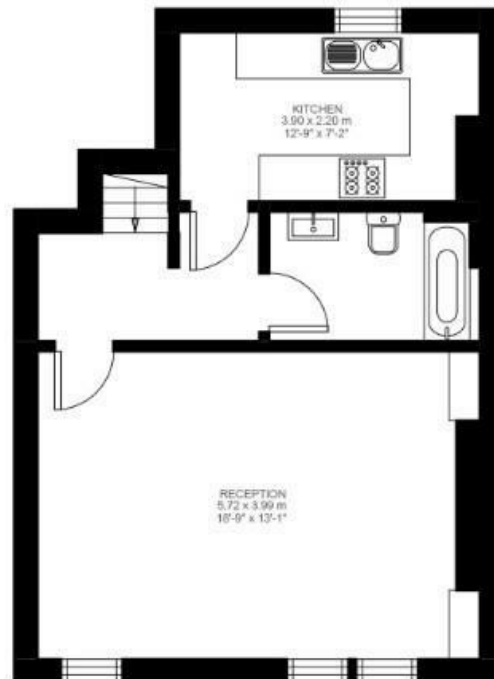
Approx internal area:

687 sqft 64 sqm

While we do try our very best, floor plans are produced as a guide only and we take no responsibility for the precise accuracy with which any property is represented



First Floor



Second Floor



Saltoun Road, Brixton, SW2

