



**Milkwood Road, Herne Hill, SE24**

**£599,950**

2 bedroom flat - conversion for sale

## Property Details

A beautiful example of a two double bedroom Victorian garden flat, located on this popular street in Herne Hill. Milkwood Road is perfectly positioned for access to Herne Hill, Dulwich and Brixton, within walking distance to all three locations and will appeal to purchasers who are contemplating moving to these each of these sought-after areas. The green open spaces of Brockwell Park are a few minutes away, the pubs and restaurants in Herne Hill, the Sunday market and the train station are all on your doorstep. The apartment can be accessed via the communal entrance or at the side of the property via your own private side access. The reception is bright with characterful features that include a feature fireplace, high ceilings and wooden flooring. The spacious eat-in kitchen diner is contemporary with all you need in terms of mod cons and plenty of worktop space. The property also benefits from having a cellar, which runs the length of the property and offers a perfect storage option for all those items not used on a daily basis. The two bedrooms are tucked away quietly at the back of the building and are both comfortable double rooms. The first bedroom has a lovely marble fireplace with high ceilings and the second bedroom has space for a deck and stunning bi folding doors that allow a seamless transition from inside to out. The two-tiered secluded private garden is a great size, low maintenance and the perfect area to relax in the warmer months.

## Features

- Two double bedrooms
- Victorian conversion
- Characterful features
- Good condition throughout
- Over 770 square feet of internal living space
- Cellar
- Private garden
- Moments from Herne Hill station and Brockwell Park
- Walking distance to Brixton and Dulwich Villages

Council tax band      EPC rating E (54)



# K

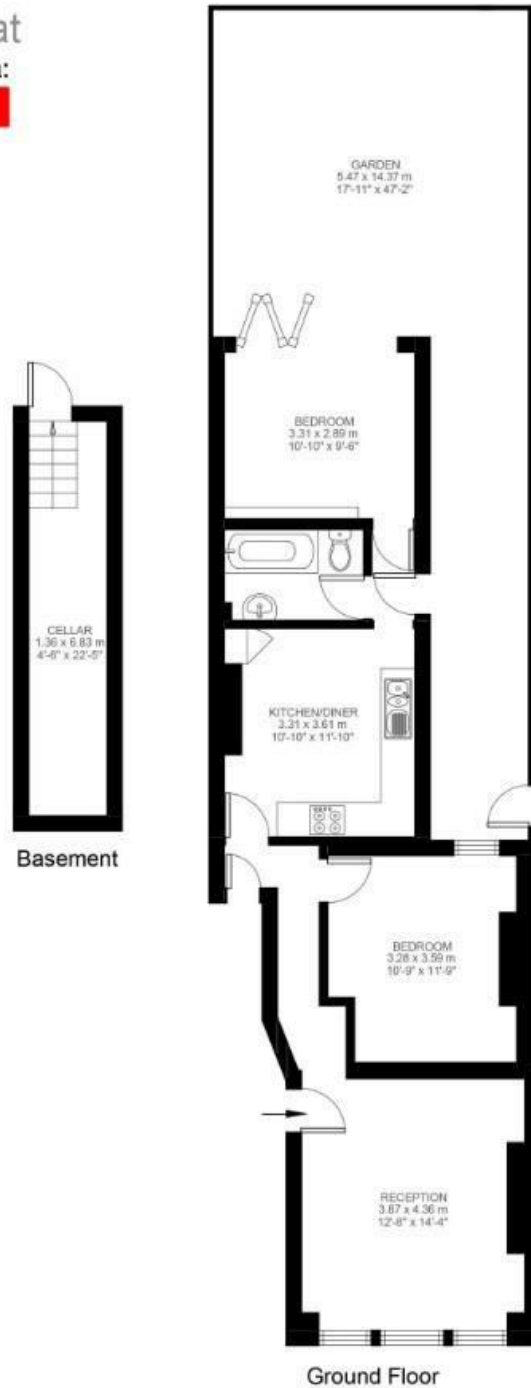
## Milkwood Road

### 2 Bedroom Flat

Approx internal area:

**772 sqft 72 sqm**

While we do try our very best, floor plans are produced as a guide only and we take no responsibility for the precise accuracy with which any property is represented



Milkwood Road, Herne Hill, SE24

