



**Dalberg Road, Brixton, SW2**

**£725,000**

2 bedroom flat - conversion for sale

## Property Details

A stylish and well located two double bedroom garden flat, located on the desirable Dalberg Road. This highly sought-after residential street sits in-between the excitement of Brixton and leafy Herne Hill. Beautifully presented, this spacious apartment occupies the ground floor of a well maintained Victorian terraced house. Boasting a large open plan Reception/ kitchen diner which runs across the rear of the property and opens out onto the private garden. With the addition of a terrace, skylights and concertina doors, this majestic room is flooded with natural light and is a truly enviable space to relax or entertain in.

## Features

- Two double bedrooms
- Victorian conversion
- Bright, spacious and full of character
- Over 770 square feet of internal living space
- Private garden
- Well located for the best of both worlds
- Short walk to both Brixton and Herne Hill
- Brockwell Park on the doorstep
- Chain Free

Council tax band D    EPC rating D (56)



Dalberg Road, Brixton, SW2

**K**

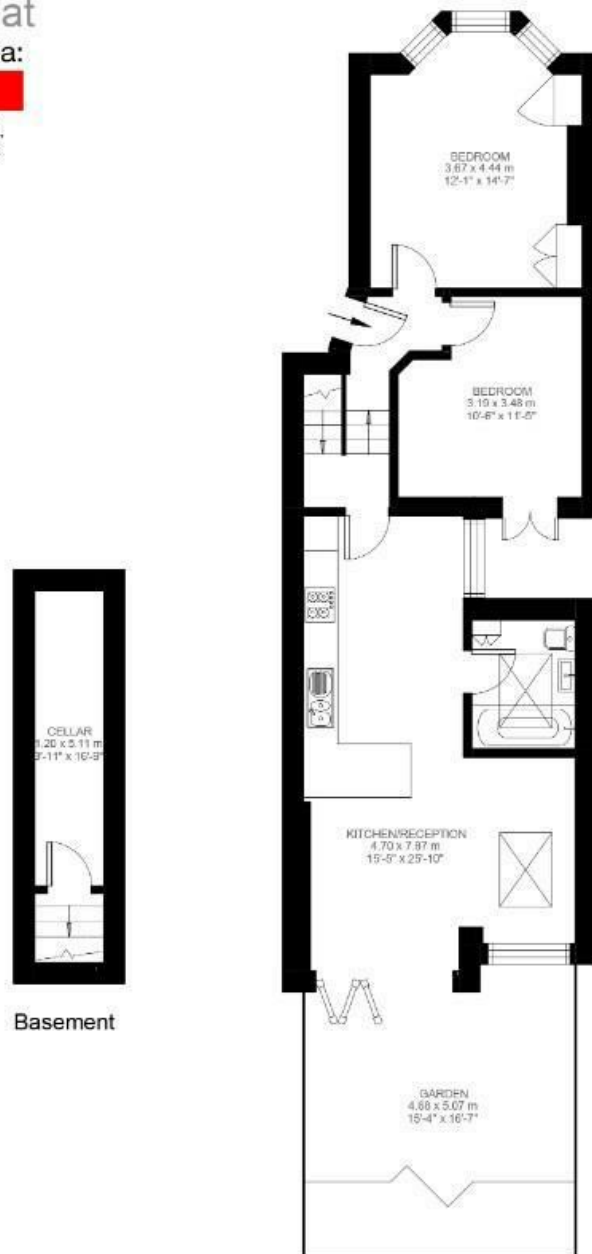
Dalberg Road

2 Bedroom Flat

Approx internal area:

**771 sqft 72 sqm**

While we do try our very best, floor plans are produced as a guide only and we take no responsibility for the precise accuracy with which any property is represented



Basement

Ground Floor



Dalberg Road, Brixton, SW2

