



Lyham Road, Brixton, SW2

£425,000

1 bedroom flat - conversion for sale

Property Details

A stunning example of a one-bedroom split level apartment in excellent condition, nestled on the top floor flat of an attractive Victorian converted townhouse, ideally located within a ten-minute walk to both Brixton and Clapham. Tucked away quietly at the back of the building is a comfortable double bedroom, fitted with premium built-in wardrobes and the ceilings are vaulted which adds to the bright and airy atmosphere. Sitting adjacent is the contemporary bathroom which is beautifully finished and has a heated towel rail. Stairs lead to the wonderful open-plan living space which is elegantly styled with bamboo flooring and a stylish glass bannister. There are multiple skylights which have been fitted with solar-powered blinds and the icing on the cake is the Juliet balcony. The kitchen has been finished to a high standard with high gloss cupboards and integrated appliances. Chain-free.

Features

- One double bedroom
- Victorian conversion
- Split-level apartment
- Bright and airy atmosphere throughout
- Over 550 square feet of internal living space
- Juliet balcony
- Equidistant to Brixton and Clapham
- Walking distance to the Northern and Victoria tube lines
- Chain-free

Council tax band EPC rating (null)



Lyham Road

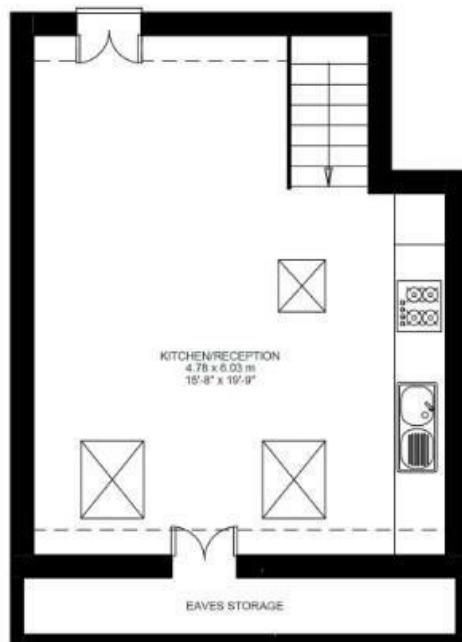
K

1 Bed Flat

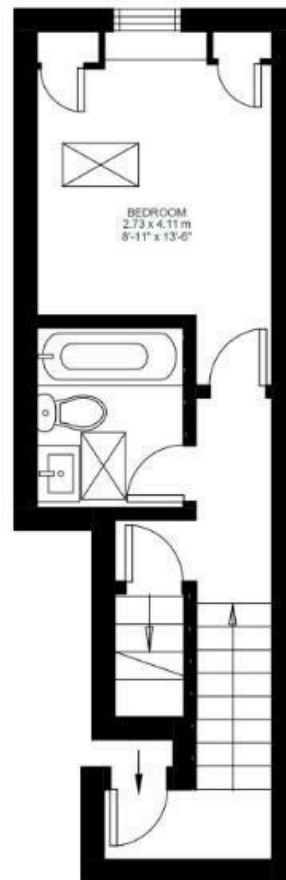
Approx internal area:

553 sqft 51 sqm

While we do try our very best, floor plans are produced as a guide only and we take no responsibility for the precise accuracy with which any property is represented



Second Floor



First Floor



Lyham Road, Brixton, SW2

