



Gateley Road, Brixton, SW9

1 bedroom flat - conversion for sale

£450,000

Share of Freehold

Property Details

Set in the heart of Brixton on the ground floor of this end of terrace Victorian conversion, a spacious and bright blank canvas. This one double bedroom ground floor flat offers potential buyers the chance to turn this characterful property into something truly their own. A large bay window and original fire place occupy the splendid front room, which opens up through double doors to a second room at the rear of the property, which is currently used as the bedroom. This room is as characterful as the reception, embellished with a ceiling rose and large glass doors opening out to the garden, offering ample natural light and a delightful flow of air through the flat. A little further down the hallway you will find a generous Kitchen/ Diner, offering plenty of surface space, storage and utilities, all complimented by large glass doors also opening out to a private share of the large garden. The bathroom is to the rear of the property.

Council tax band C EPC rating E (53)

Features

- One double bedroom
- Converted Victorian townhouse
- Bright and full of character
- Local amenities on the doorstep
- Ideal central location
- Share of freehold
- Chain free



Gateley Road

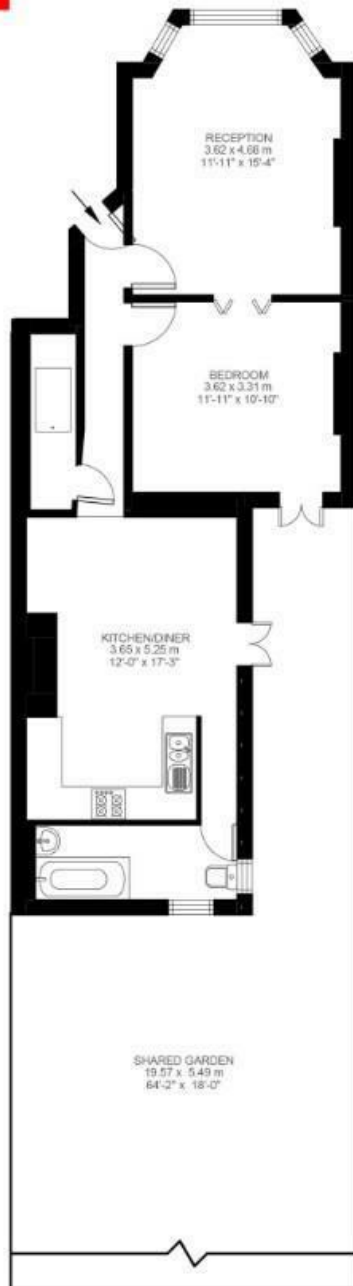
K

1 Bedroom Flat

Approx internal area:

736 sqft 68 sqm

While we do try our very best, floor plans are produced as a guide only and we take no responsibility for the precise accuracy with which any property is represented



Ground Floor



Lower Ground Floor



Gateley Road, Brixton, SW9

