

Clapham High Street, Clapham, SW4

£525,000

2 bedroom flat - conversion for sale

Property Details

A well-presented two double bedroom flat in the heart of Clapham. With fantastic transport links virtually on your doorstep, this property is surprisingly spacious and has been well cared for throughout. The large windows and high ceilings of this building allow generous light and a lovely airy feeling in every room. The remarkably large open plan reception room is stunning. Three large sash windows allow an abundance of light to flood this generous space. Characterful features like the exposed brick chimney breast and modern, sleek kitchen create a harmony between the period charm and contemporary feel many properties of this type strive to achieve. There is ample space to relax, dine and entertain guests. The impressive main room is supplemented by two genuine double bedrooms, one of which is really quite considerable in size, both with large windows and built-in storage. Both bedrooms are truly large enough to create a tranquil, relaxing environment and they share a fully equipped modern bathroom.

Council tax band C EPC rating D (65)

Features

- Two double bedrooms
- Bright and spacious
- Modern and characterful
- Over 800 square feet of internal living space
- Fantastic transport links within close proximity
- Local amenities of every kind
- Chain-free





Clapham High Street

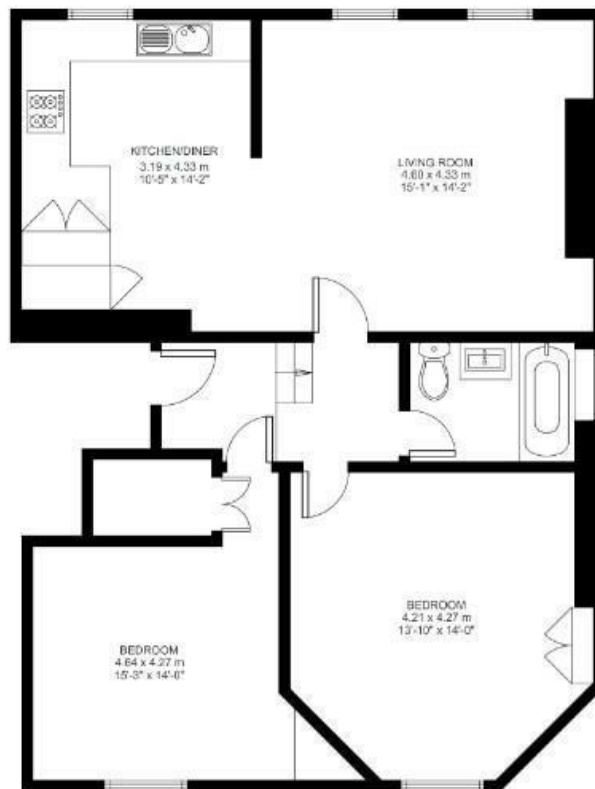
2 Bed Flat

Approx internal area:

837 sqft 78 sqm

While we do try our very best, floor plans are produced as a guide only and we take no responsibility for the precise accuracy with which any property is represented

Second Floor



Clapham High Street, Clapham, SW4

