



Leander Road, Brixton, SW2

4 bedroom house for sale

£1,200,000

Freehold

Property Details

Keating Estates are delighted to present this elegant and characterful four double bedroom Victorian terraced townhouse to market. This property has been lovingly cared for and refurbished by the present owners with enormous sensitivity to the period character of the property. Nestled in Leander Road (a sought after, quiet road in the heart of the Josephine Avenue conservation area) the property is only a short walk away from local shops, Brockwell Park and the enormous variety of amenities on offer in central Brixton and Herne Hill. With three overground stations on different lines within easy reach, as well as first stop on the Victoria line at Brixton tube, its location cannot be overstated. The building says quality from top to bottom, with fantastic dimensions, boasting over 1700 square feet of internal living space and access to substantial loft space which could be converted to add value, increasing the overall size of this family home.

Features

- Four double bedrooms
- Two bathrooms
- Victorian terrace house
- Stunning mix of contemporary design and characterful features
- Nearly 1700 square feet of internal living space
- Potential to extend into the substantial loft space
- Popular residential road in the heart of the Josephine conservation area
- A short walk to Brockwell Park
- Brixton and Herne Hill town centres within a fifteen minute walk
- Freehold

Council tax band F EPC rating (null)





Leander Road

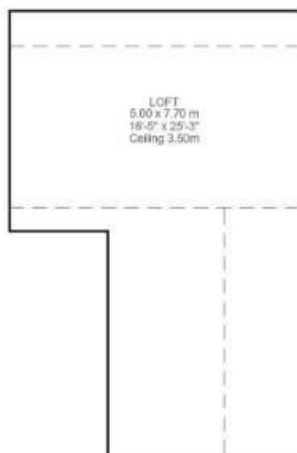
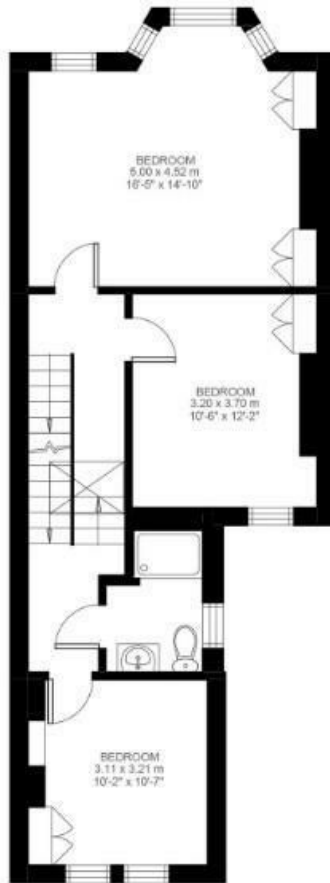
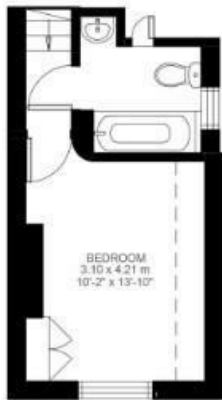
4 Bedroom House

Approx internal area:

1682 sqft 156 sqm

(EXCLUDING LOFT)
 LOFT STORAGE 38.50 SQ.M / 414 SQ.FT
 INCLUSIVE TOTAL AREA 194.50 SQ.M / 2094 SQ.FT

While we do try our very best, floor plans are produced as a guide only and we take no responsibility for the precise accuracy with which any property is represented



Leander Road, Brixton, SW2

