

Herne Hill, Herne Hill, SE24

4 bedroom flat - conversion for sale

£850,000

Property Details

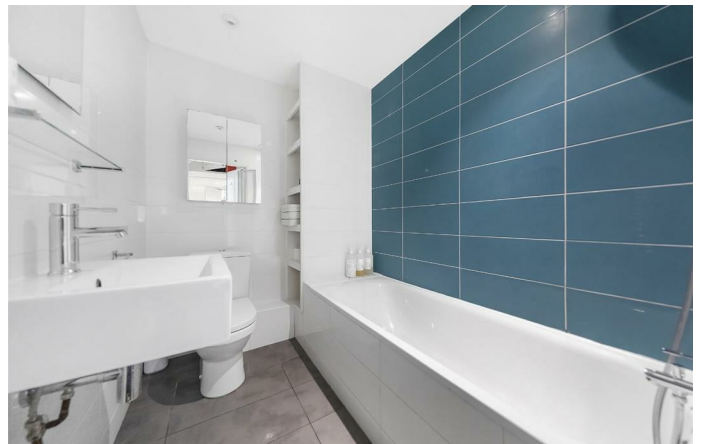
A stunning split-level four bedroom, three bathroom apartment occupying the first and second floors of a converted, grand semi-detached Victorian townhouse. The first floor of this property, which boasts the handsome open-plan reception room is full of character with a beautiful fire place and the balcony is over-looking the neighbouring gardens and rooftops. The large connecting kitchen opens out into this room, providing a lovely communal space to dine, socialise and entertain. There is also a conveniently located bathroom on this floor. On the second floor, you are met by three large rooms. A Master bedroom with an en-suite, a second double bedroom which and a pretty mezzanine room.

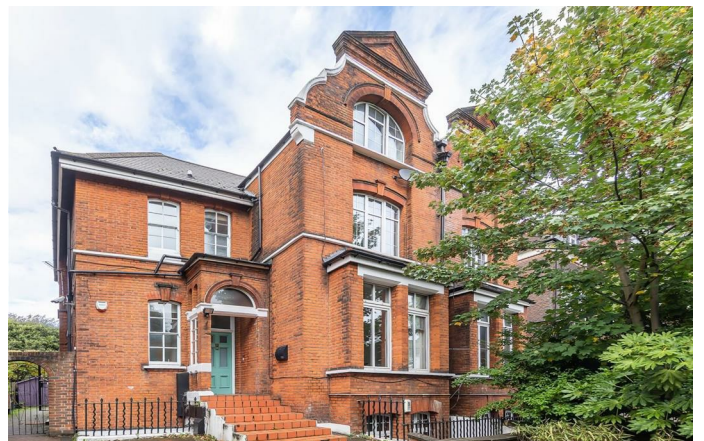
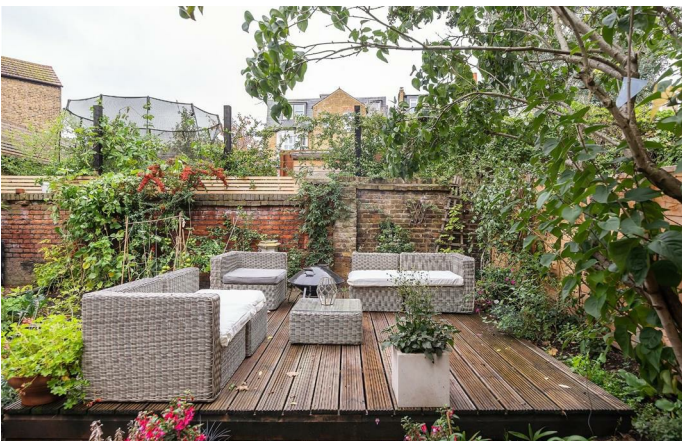
Features

- Four Bedrooms
- Three Bathrooms
- Endearingly characterful
- Over 1340 square feet of living space
- Pretty Balcony
- Access to a private share of the garden
- Herne Hill & Brockwell Park
- Charming split-level
- Off street parking

Council tax band D

EPC rating D (55)





Herne Hill, Herne Hill, SE24

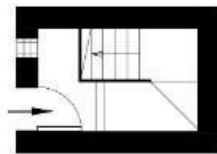
K

3 Bedroom Flat

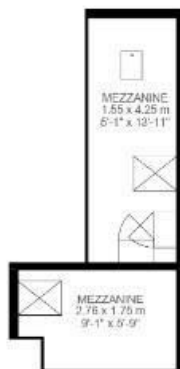
Approx internal area:

1345 sqft 125 sqm

While we do try our very best, floor plans are produced as a guide only and we take no responsibility for the precise accuracy with which any property is represented



Ground Floor

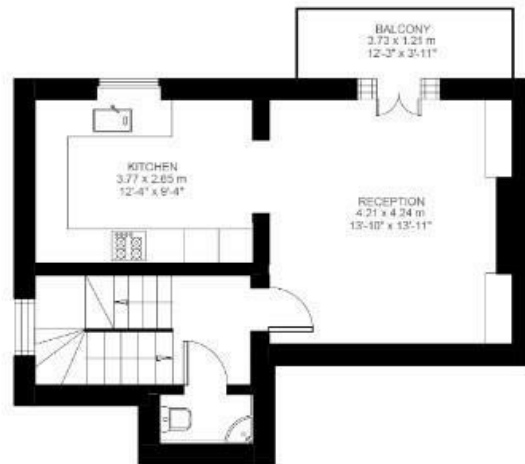


Mezzanine

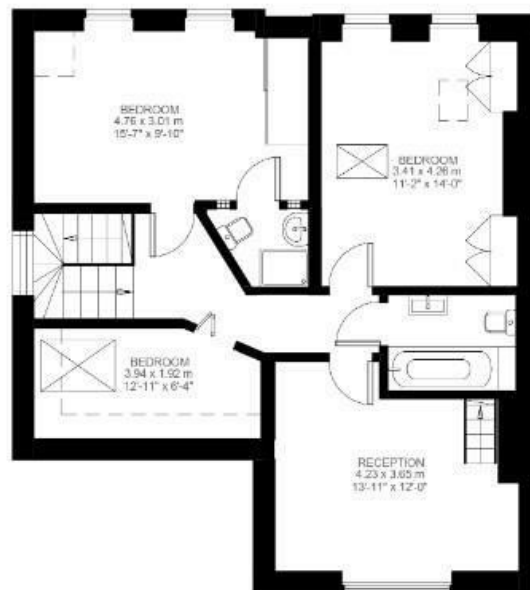


GARDEN
10.33 x 10.08 m
33'-11" x 33'-0"

Herne Hill



First Floor



Second Floor



Herne Hill, Herne Hill, SE24

