



## Dumbarton Court, Brixton, SW2

£375,000

2 bedroom flat - purpose built for sale

### Property Details

This stylish, two double bedroom flat is on the first floor a popular Art Deco building, Dumbarton Court, within secure, gated, well-maintained grounds, and enjoys a quiet setting, tucked away from the hustle and bustle of Brixton Hill. The master bedroom is a spacious double room, whilst the second bedroom is also a genuine double, making the apartment an ideal investment for anyone looking to rent out a room. The recently fitted, galley kitchen is sleek and stylish, provides all you need in terms of mod cons and fits the space perfectly. Just adjacent is the inviting reception room which has a cosy feel, with exposed original floorboards. The icing on the cake is the sunny balcony, accessed directly from the reception room, providing the perfect spot in which to relax during the warmer months. Dumbarton Court is located just off vibrant Brixton Hill and has the option of secure, off-street parking on application. All that Brixton has to offer is within an easy fifteen minute walk straight down the hill. The popular establishments on Brixton Hill itself are within touching distance, including F Mondays, Stir Coffee, PIZZA Brixton and the ever-popular White Horse Pub, as well as neighbourhood favourite, the Elm Park Tavern, located a stone's throw away. The first stop on the Victoria Line at Brixton tube station is a short stroll down the hill and multiple buses run up and down Brixton Hill, whisking you down to the tube within a few minutes and through into central London.

### Features

- Two double bedrooms
- Art Deco gated development
- Bright and airy atmosphere through
- Private balcony
- Parking available on application
- Tucked away quietly in the development
- Located a fifteen-minute walk from Brixton tube station

Council tax band      EPC rating (null)











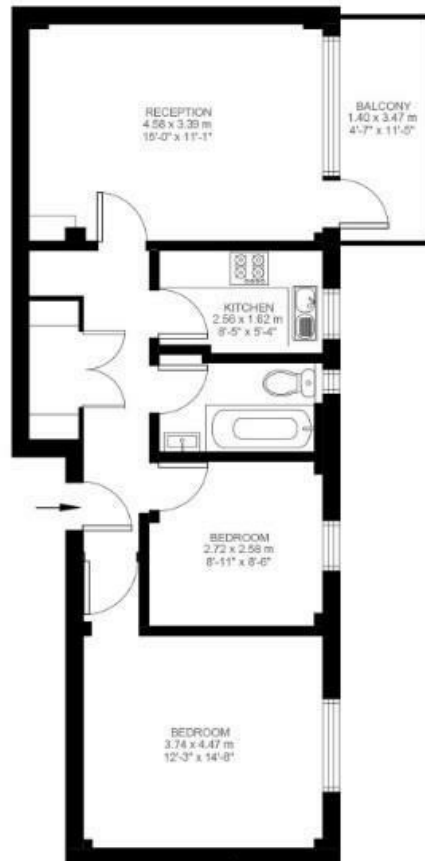
## Dumbarton Court

### 2 Bedroom Flat

Approx internal area:

**583 sqft 54 sqm**

While we do try our very best, floor plans are produced as a guide only and we take no responsibility for the precise accuracy with which any property is represented



First Floor





Dumbarton Court, Brixton, SW2

