



Brixton Hill, Brixton, SW2

£365,000

1 bedroom flat for sale

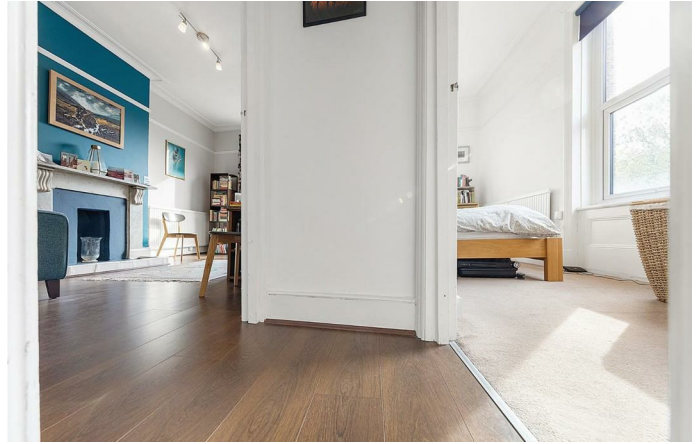
Property Details

This beautiful one bedroom flat is larger than average, well proportioned, and set back off Brixton Hill. The property is perfect for anyone who wants to be located securely, with fantastic transport links on their doorstep and with double glazed windows to drown out the buzz of the road. At over 550 square feet of internal floor space, this property will appeal to a wide range of purchasers from first time buyers to buy-to-let investors. The separate living room is a great size and boasts a stunning fireplace. It is bright, airy and is located adjacent to a large eat-in kitchen diner. The whole property is packed with character, a neutral blank canvas which is ideal for anyone looking to move into a property hassle free and stamp their own mark. The bedroom has ample floor space and a couple of steps lead down to a utility area and a bathroom at the rear.

Features

- One double bedroom
- Beautiful character
- Secure apartment
- Local amenities on the doorstep
- Transport links a short walk away
- Local to Brockwell Park

Council tax band C EPC rating D (66)





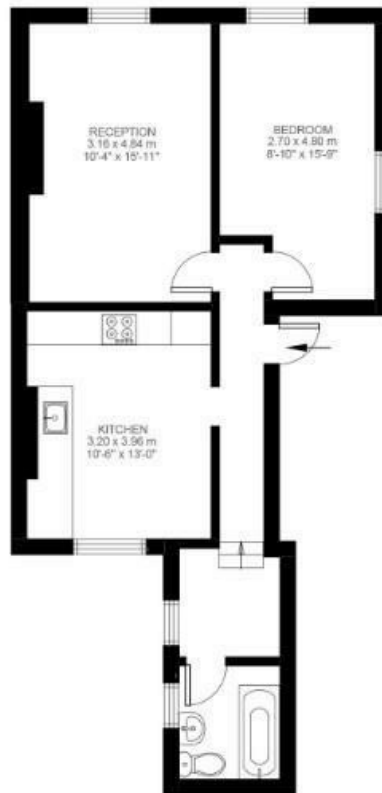
1 Bedroom Flat

Approx internal area:

580 sqft 54 sqm

While we do try our very best, floor plans are produced as a guide only and we take no responsibility for the precise accuracy with which any property is represented

Brixton Hill



Second Floor



Brixton Hill, Brixton, SW2

