



**Josephine Avenue, Brixton, SW2**

**£450,000**

1 bedroom flat - conversion for sale

## Property Details

At the front of the property, the open plan kitchen/reception room is a bright and stylish space with ample room for dining, relaxing and entertaining. The space benefits from an abundance of natural light thanks to a lovely bay window, offering views over the leafy front garden. The country-style kitchen oozes charm whilst offering a high standard of practicality, with plenty of storage and top of the range appliances. The bedroom sits alongside the open-plan reception, also benefitting from a large bay window and plenty of space for storage options. The flat is complimented by a contemporary family bathroom with trendy metro tiling. Further benefits include a large, well-maintained, shared rear garden, secure bike storage and off-street parking (operating on a first-come, first-served basis).

## Features

- One bedroom
- Characterful and modern
- Tastefully decorated throughout
- Open-plan reception
- Communal garden
- Quiet sought-after residential road
- Close to Brockwell Park

Council tax band C    EPC rating B (81)





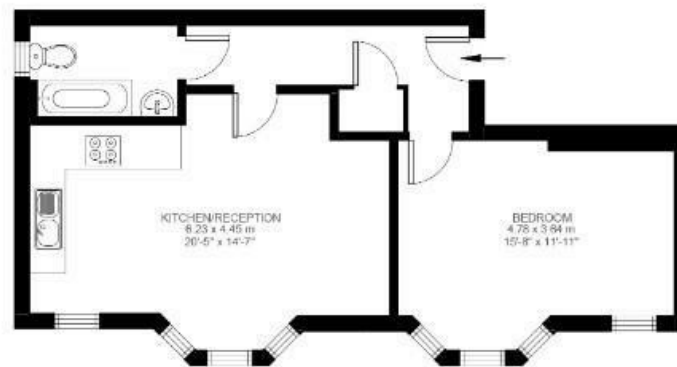
## Josephine Avenue

### 1 Bedroom Flat

Approx internal area:

**557 sqft 52 sqm**

While we do try our very best, floor plans are produced as a guide only and we take no responsibility for the precise accuracy with which any property is represented



First Floor



Josephine Avenue, Brixton, SW2

