



Brixton Hill Court, Brixton Hill, Brixton, SW2

£400,000

2 bedroom flat - purpose built for sale

Property Details

Set back from the road at the rear of the development, this characterful two double bedroom flat resides in a well maintained and popular Art Deco building, offering many benefits from a private car park to an on-call caretaker around the clock. The flat itself comprises of two generously sized double bedrooms, a modern bathroom and a fantastic reception room, all complimented by a fairly new, highly functional kitchen with sleek white appliances. The property also offers a large, well maintained shared garden as well as electric gates and a lift.

Features

- Two double bedrooms
- Art Deco Building
- Bright and airy throughout
- Private parking
- 24-hour on call caretaker
- Quiet area set back from the road
- Communal gardens
- Located a five-minute walk from Brixton tube station

Council tax band C EPC rating (null)



Brixton Hill

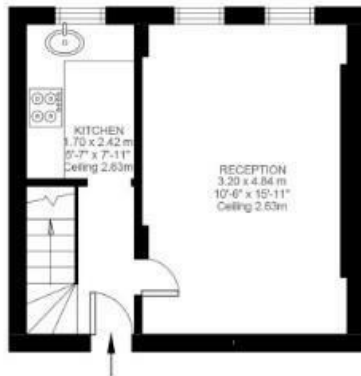
K

2 Bedroom Flat

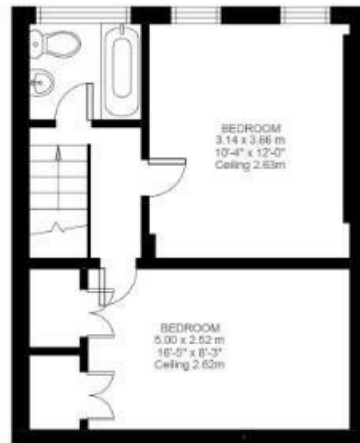
Approx internal area:

609 sqft 57 sqm

While we do try our very best, floor plans are produced as a guide only and we take no responsibility for the precise accuracy with which any property is represented



Third Floor



Fourth Floor



Brixton Hill Court, Brixton Hill, Brixton, SW2

