

Brading Road, Brixton, SW2

2 bedroom flat - conversion for sale

£650,000

Share of Freehold

Property Details

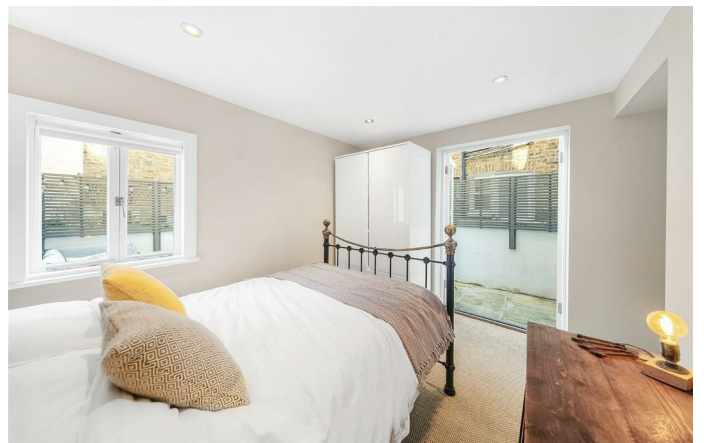
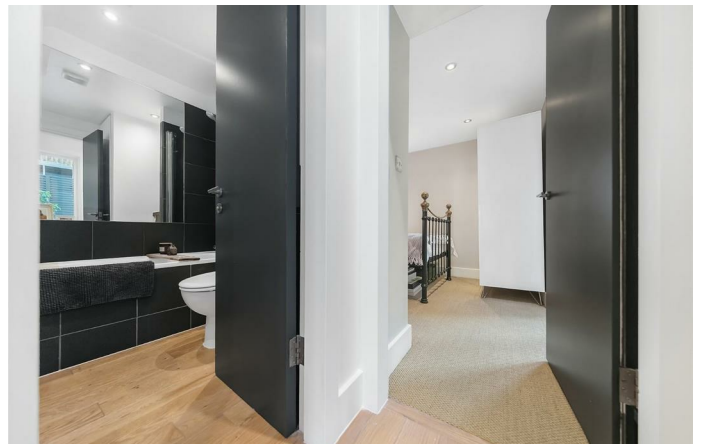
This well-presented two double bedroom, split-level garden flat is located on a quiet, aesthetically pleasing Victorian terraced street, tucked away off Brixton Hill. Bright and elegant, this charming space will appeal to many buyers. On entrance, you are met by a large open-plan reception that spans the width and length of the property, boasting a cosy living area with two original fireplaces and bay window, a gorgeous modern kitchen overlooks the dining area, ideal for entertaining and complimented by a breakfast bar. Towards the rear of the ground floor is a full equipped, modern bathroom. Followed by a well-proportioned double bedroom, benefitting from glass double doors that open out to the private low-maintenance garden, allowing sunlight and fresh air to flood in from the pretty, south-facing outside space. Just up the stairs, the master bedroom sits perfectly overlooking the garden below, also benefitting from an abundance of sunlight. This room has plenty of built-in storage and a cleverly tucked-away en-suite which is characterfully disguised with double doors that match the wardrobes. A truly lovely apartment that will endear a wide range of purchasers. Anyone looking for a buy-to-let, to share with friends or a convenient pied-a-terre, are likely to be charmed by the modern décor and characterful aspects that this well-located flat has to offer.

Features

- Two double bedrooms
- Two bathrooms
- Victorian conversion
- Stylish split-level
- 723 square feet of internal living space
- Private garden
- Share of freehold

Council tax band C

EPC rating D (60)





Brading Road, Brixton, SW2



2 Bedroom Flat

Approx internal area:

723 sqft 67 sqm

While we do try our very best, floor plans are produced as a guide only and we take no responsibility for the precise accuracy with which any property is represented

Brading Road



Brading Road, Brixton, SW2

