

**Kellett Road, Brixton, SW2**

**£609,950**

2 bedroom flat - conversion for sale

## Property Details

A two-bedroom garden flat within a Victorian terraced house on one of Brixton's most sought-after residential streets. Kellett Road is a five-minute walk to Brixton tube station and Brockwell Park is a seven-minute walk in the other direction. The property is on the ground floor and has been completely refurbished with newly fitted carpets, kitchen and bathroom and has been newly painted throughout. The property has a great mix of original and contemporary features, the reception room is a great size, with a feature fireplace and large bay windows flooding the room with natural light. To the middle of the property, you are met with the first double bedroom which opens out to the side return of the garden. The kitchen is stylish and spacious, fitted with all the mod cons and integrated appliance and the modern family bathroom fitted with a towel rail. To the rear of the property is the second double bedroom, bright and airy with double doors leading out to the garden. The garden is the perfect space to entertain guests or relax during the warmer months.

## Features

- Two double bedrooms
- Victorian conversion
- Newly refurbished and tastefully decorated
- 650 square feet of internal living space
- Private garden
- Sought-after residential road moments from Brixton tube station
- Brockwell Park is within a seven minute stroll
- Chain-free

Council tax band C    EPC rating D (62)







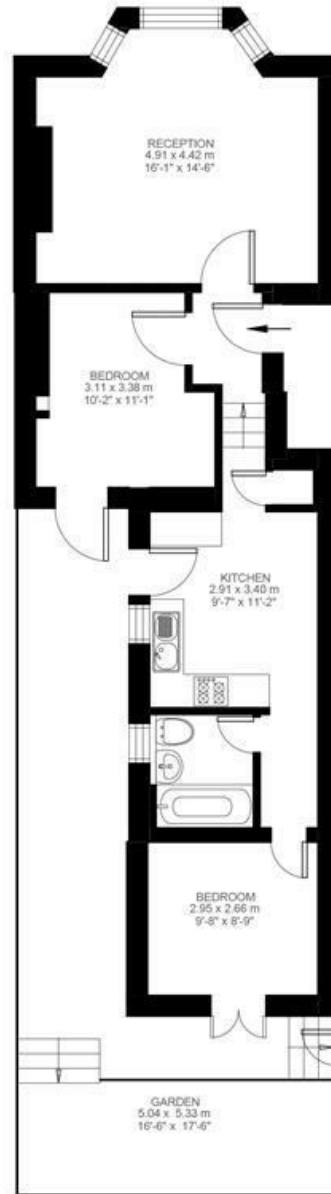
## Kellett Road

### 2 Bedroom Flat

Approx internal area:

**647 sqft 60 sqm**

While we do try our very best, floor plans are produced as a guide only and we take no responsibility for the precise accuracy with which any property is represented



Ground Floor



Kellett Road, Brixton, SW2

