



Kellett Road, Brixton, SW2

3 bedroom flat - conversion for sale

£550,000

Share of Freehold

Property Details

The perfect opportunity to stamp your own mark on a fantastic three double bedroom split-level flat, on one of the most popular streets in Brixton, Kellett Road. This handsome Victorian terrace is situated in the heart of Brixton - just around the corner from Windrush Square and The Ritzy, this apartment is perfect for anyone looking to be close to the action, and cut down their commute, with first stop on the Victoria line at Brixton station only a five minute walk away.

The open plan reception room at the front of the property is bright and spacious, complete with an original fire place, high ceilings, and wooden floors, all providing plenty of character.

The sociable open kitchen provides a fantastic hub for dining and entertaining, complete with good storage units and generous light. Both the large master bedroom and another well-proportioned double bedroom come with plenty of built in storage, making this property perfect for anyone looking to rent out a bedroom, or share with friends. Third bedroom could double up as a study or dressing room, providing a huge range of potential within this property.

Council tax band C EPC rating (null)

Features

- 3 bedrooms
- Split level Victorian conversion
- Well-lit and full of character
- Highly sought after location
- Close to transport links
- Close to Brockwell park
- Share of Freehold
- Chain Free



Kellett Road, Brixton, SW2

K

Kellett Road

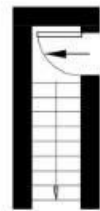
3 Bedroom Flat

Approx internal area:

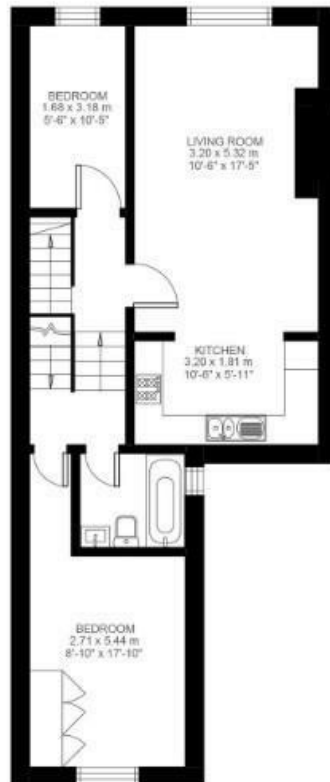
792 sqft 74 sqm

(EXCLUDING EAVES STORAGE)
EAVES STORAGE 11.07 SQ.M / 119 SQ.FT
INCLUSIVE TOTAL AREA 85.07 SQ.M / 916 SQ.FT

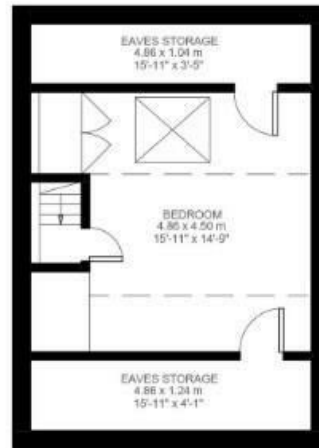
While we do try our very best, floor plans are produced as a guide only and we take no responsibility for the precise accuracy with which any property is represented



First Floor



Second Floor



Third Floor



Kellett Road, Brixton, SW2

