

**Acre Lane, Brixton, SW2**

2 bedroom flat - conversion for sale

**£550,000**

## Property Details

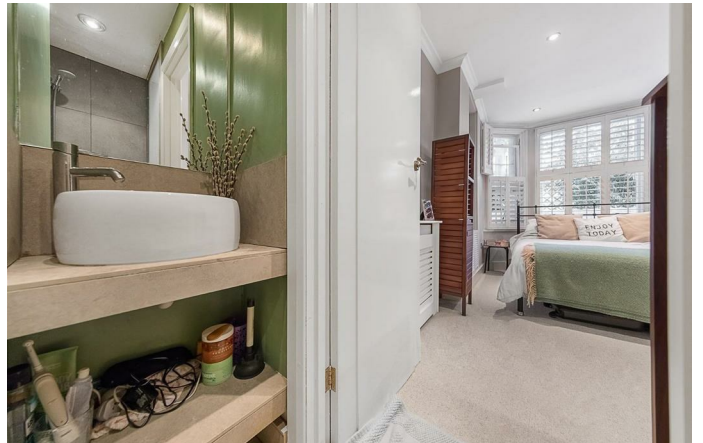
A delightfully arranged, two double bedroom, two bathroom garden flat within a handsome Victorian property, set back quietly from Acre Lane with a private entrance. The heart of the home is a bright and airy open-plan reception room located at the front of the property which is flooded with natural light through the bay window. This fantastic space is a superb entertaining area, with ample room for a large dining table. The kitchen is sleek with plenty of worktop and storage space and all you need in terms of mod cons. Tucked away quietly to the rear of the flat are the two bedrooms. The master bedroom is a generous double, boasting spacious fitted wardrobes and a modern en-suite bathroom. The second bedroom is perfect for use as a guest room, study, child's bedroom etc. and provides access onto the private paved section of the garden - peaceful and low-maintenance, the perfect area to while away the hours reading or sipping a morning coffee. The private garden leads to a larger than average, well-maintained shared garden, which is sure to be used on a regular basis and provides the perfect spot in which to enjoy the sun throughout the warmer months. This lovely home is located a short walk to both Brixton and Clapham High Streets, appealing to purchasers contemplating moving to these two popular locations.

## Features

- Two double bedrooms
- Two bathrooms
- Victorian converted house
- Private entrance
- Beautifully finished throughout
- Bedrooms tucked away at the back of the building
- 770 square feet of internal living space
- Outside space
- Chain-free

Council tax band      EPC rating (null)







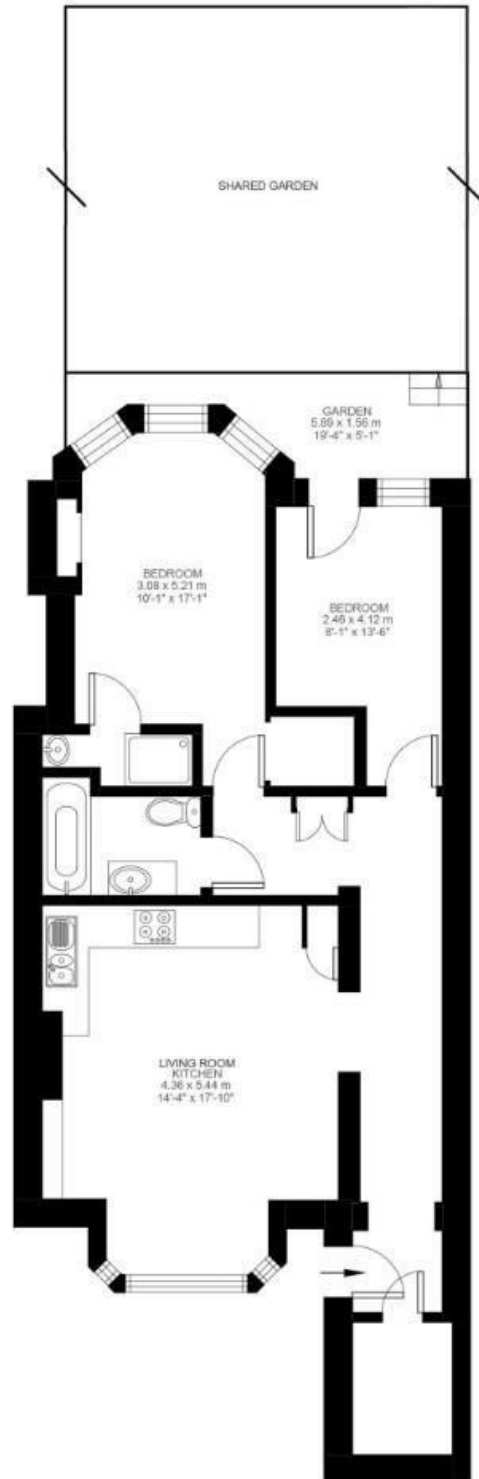
## 2 Bedroom Flat

Approx internal area:

**770 sqft 72 sqm**

While we do try our very best, floor plans are produced as a guide only and we take no responsibility for the precise accuracy with which any property is represented

## Acre Lane





Acre Lane, Brixton, SW2

