



## Hayter Road, Brixton, SW2

2 bedroom flat - conversion for sale

£525,000

### Property Details

A two double bedroom, Victorian conversion flat which comprises a spacious open-plan living kitchen area which is flooded with natural light, a modern bathroom and two double bedrooms tucked away quietly at the rear of the property. The property is an eight to ten-minute walk from Brixton, South London's new culinary mecca, with all it has to offer in terms of nightlife. It is also a ten-minute walk from what many local residents regard as London's best public space, Brockwell Park. In short, a beautiful building on a sought after street in this conservation area. Chain Free.

Council tax band C    EPC rating D (63)

### Features

- Two double bedrooms
- Two bathrooms
- Victorian conversion
- Bright and airy throughout
- Newly refurbished
- Sought-after location
- Local amenities of Brixton Hill
- Brockwell Park in moments
- Walking distance to the Northern and Victoria tube lines
- Chain-free





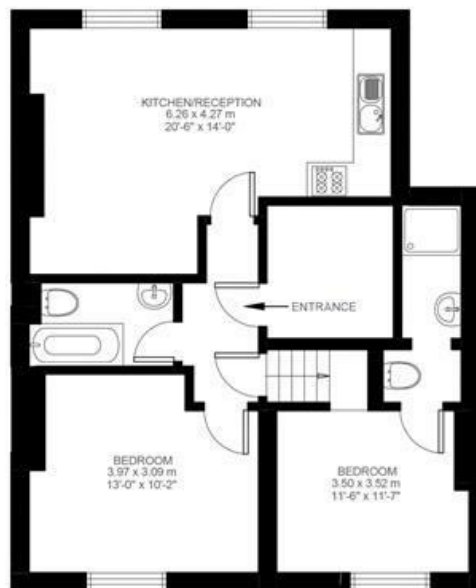
## Hayter Road

### 2 Bedroom Flat

Approx internal area:

**629 sqft 58 sqm**

While we do try our very best, floor plans are produced as a guide only and we take no responsibility for the precise accuracy with which any property is represented



First Floor



Hayter Road, Brixton, SW2

