

## Thornbury Road, Brixton, SW2

2 bedroom flat - conversion for sale

£425,000

Share of Freehold

### Property Details

A stylish two double bedroom flat on the first floor of a characterful Victorian terraced house on a popular, leafy residential street. This charming property comprises of a bright and sociable open plan reception room occupying the front, great for sharing with friends as the space is sociable and relaxing. The two double bedrooms reside peacefully at the rear of the building and are complimented by a fully-stocked contemporary bathroom. The flat is of typical layout in these handsome terraced houses and maximizes on space as opposed to wasting square footage in large hallways. The owner has attentively cared for the property and it is in great condition, with tasteful decoration.

Council tax band C    EPC rating C (77)

### Features

- Two double bedrooms
- Victorian conversion
- Tastefully decorated
- Quiet residential road
- 5 minutes to local amenities
- 15 minutes to Victoria line
- Share of freehold







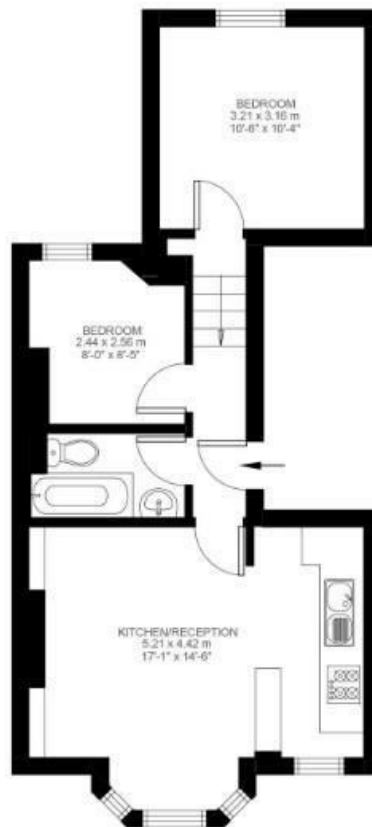
## Thornbury Road

### 2 Bedroom Flat

Approx internal area:

**515 sqft 48 sqm**

While we do try our very best, floor plans are produced as a guide only and we take no responsibility for the precise accuracy with which any property is represented



First Floor





Thornbury Road, Brixton, SW2

