



Bonham Road, Brixton, SW2

£725,000

2 bedroom flat - conversion for sale

Property Details

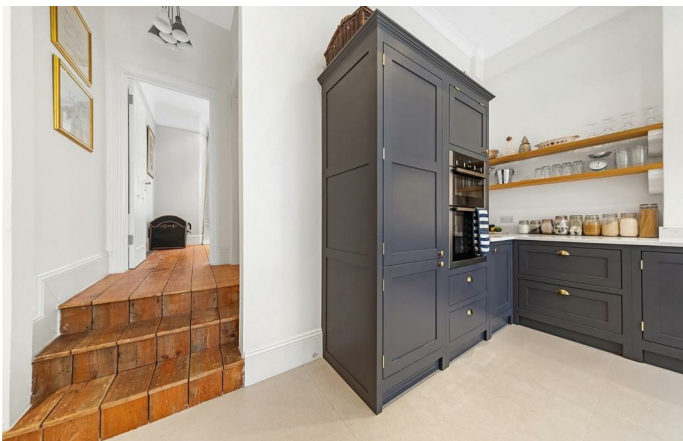
A beautifully finished two double bedroom, two bathroom garden flat with a private entrance, on a quiet, tree-lined residential road (fought over for catchment rights to Sudbourne and Corpus Christi Schools) in a popular location within walking distance to Brixton and Clapham High Streets. This exceptional apartment offers incredible living space with some serious wow-factor: stunning double-height ceilings and multiple skylights create a light and airy atmosphere throughout. Having access to private outside space is more important than ever and this beautiful East facing garden feels worlds away from the hustle and bustle of city life. The two comfortable double bedrooms are located at separate ends of the apartment, making the property a perfect option for anyone looking to rent out an additional bedroom or share with friends. This stunning spacious apartment is nestled on sleepy Bonham Road and boasts over 1000 square feet of internal living space, making it a fantastic option when compared to other period garden flats on offer in terms of size and layout.

Features

- Two double bedrooms
- Two bathrooms
- Victorian conversion
- Own front door
- Beautifully finished with a light and airy atmosphere throughout
- Extremely high ceiling height
- Over 1000 square feet of internal living space
- Quiet residential street located between Brixton and Clapham High Streets
- Access to the Victoria and Northern tube lines
- Selling chain-free

Council tax band D EPC rating (null)





Bonham Road

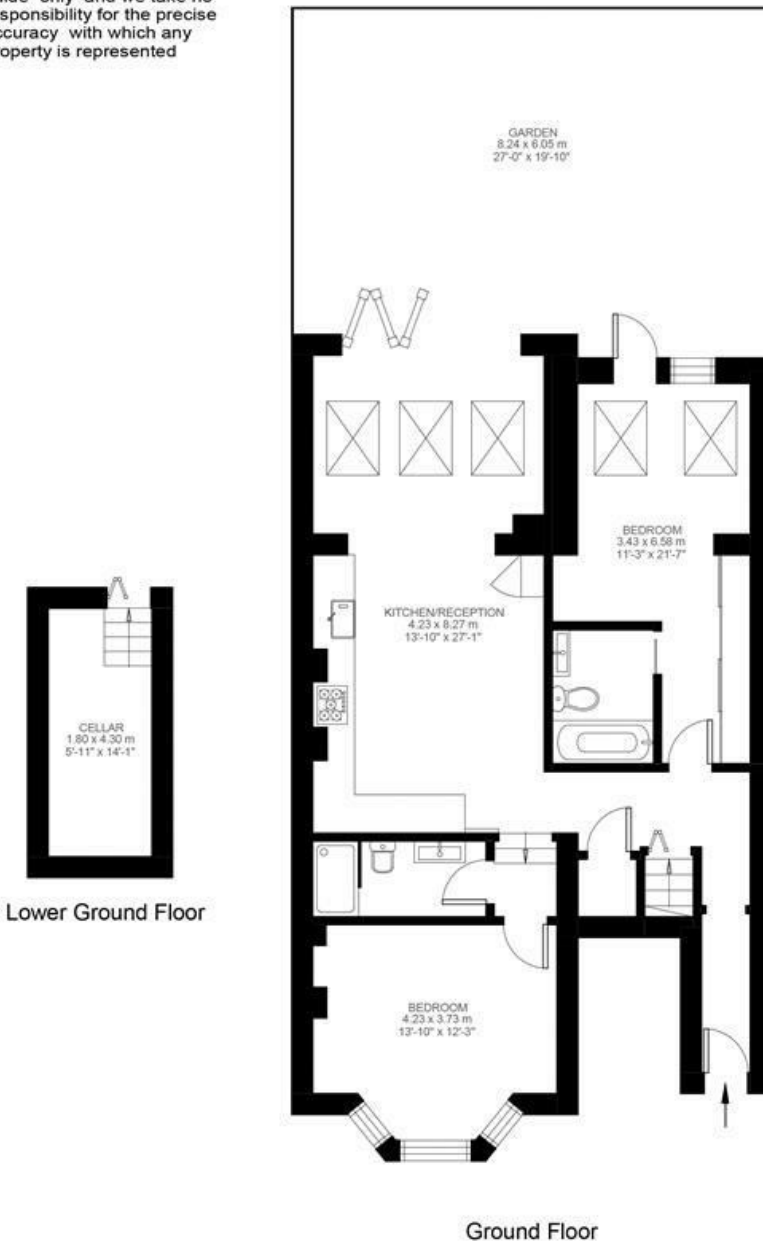


2 Bedroom Flat

Approx internal area:

1047 sqft 97 sqm

While we do try our very best, floor plans are produced as a guide only and we take no responsibility for the precise accuracy with which any property is represented



Bonham Road, Brixton, SW2

