



**Dulwich Road, Herne Hill, SE24**

2 bedroom flat - conversion for sale

**£700,000**

Share of Freehold

## Property Details

A Bright and characterful two double bedroom split level flat, occupying the ground and first floors of this handsome detached Victorian conversion on the leafy Dulwich Road, Herne Hill. The ground floor of this property comprises of a gorgeous open plan Living room/ Diner with plenty of light, high ceilings and an airy ambience throughout. Towards the rear of this floor is a separate modern kitchen that opens out onto the exceptionally large private garden. Up the stairs you will find a huge Master bedroom across the front of the property with a stunning bay window and plenty of room to unwind in a tranquil space. Further down the hallway is a second double bedroom, which boasts views over the lovely garden with a modern bathroom nestled in between the two. This type of layout creates a valued privacy between the bedrooms and therefore the second bedroom is ideal to rent out or share with friends.

## Features

- Two double bedrooms
- Victorian conversion
- Large private garden
- 982 square feet
- Leafy Dulwich Road
- Short walk to Herne Hill & Brixton
- Brockwell Park
- Share of freehold

Council tax band D    EPC rating D (68)



Dulwich Road, Herne Hill, SE24

## Dulwich Road

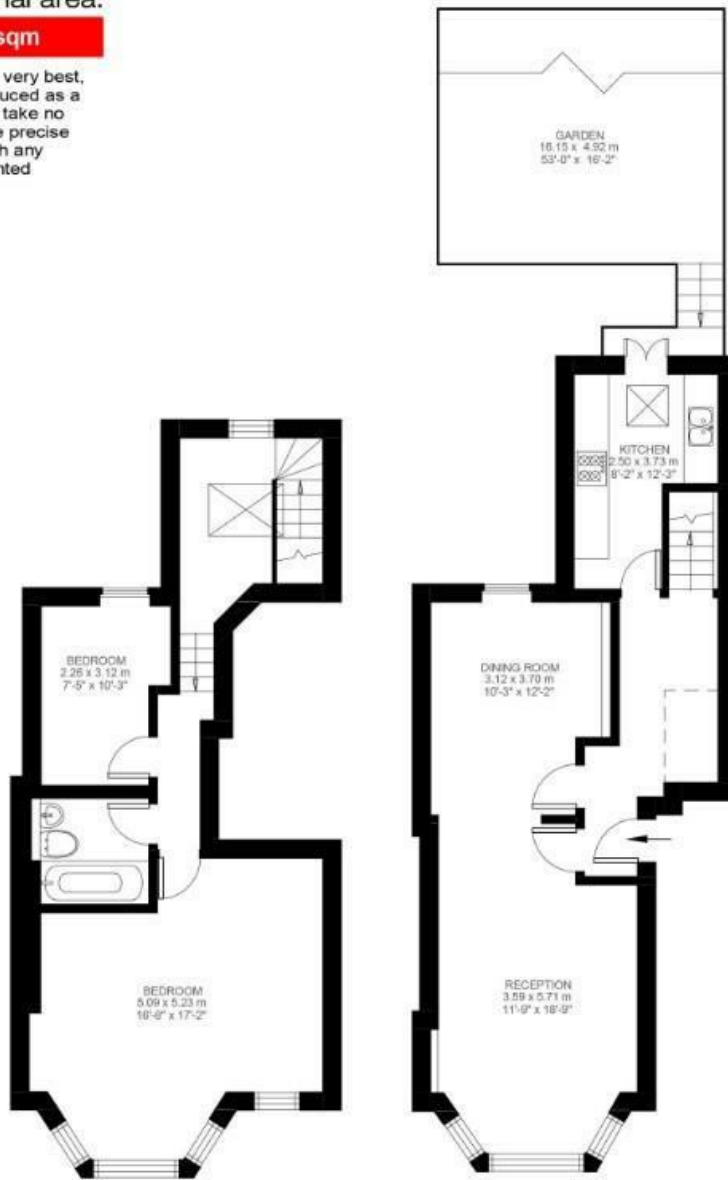
# K

### 2 Bedroom Flat

Approx internal area:

**982 sqft 91 sqm**

While we do try our very best, floor plans are produced as a guide only and we take no responsibility for the precise accuracy with which any property is represented



First Floor

Ground Floor



Dulwich Road, Herne Hill, SE24

