



Corry Drive, Brixton, SW9

4 bedroom house for sale

£600,000

Freehold

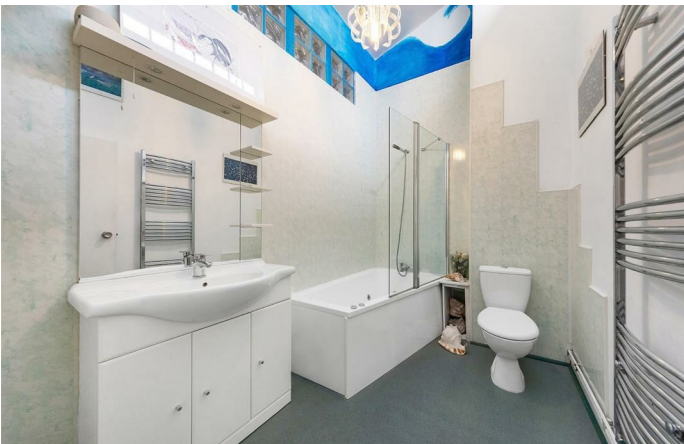
Property Details

A great opportunity to acquire a freehold terraced house in Corry Drive, ideally located off Coldharbour Lane, moments from Brixton station and all that the area offers in terms of amenities. The ground floor comprises a separate eat-in-kitchen, a W.C and a large reception room with direct access onto the private garden. Upstairs are four bedrooms and the modern family bathroom. The house is eight minutes from Brixton tube station - the first stop on the Victoria Line, arguably London's favourite Underground line, ready to whisk you into central London within ten to fifteen minutes. Chain-free.

Features

- Four bedrooms
- Freehold terrace house
- Over 1000 square feet of internal living space
- Bright and airy atmosphere throughout
- Central location, close to Brixton tube station
- Chain-free

Council tax band EPC rating C (69)





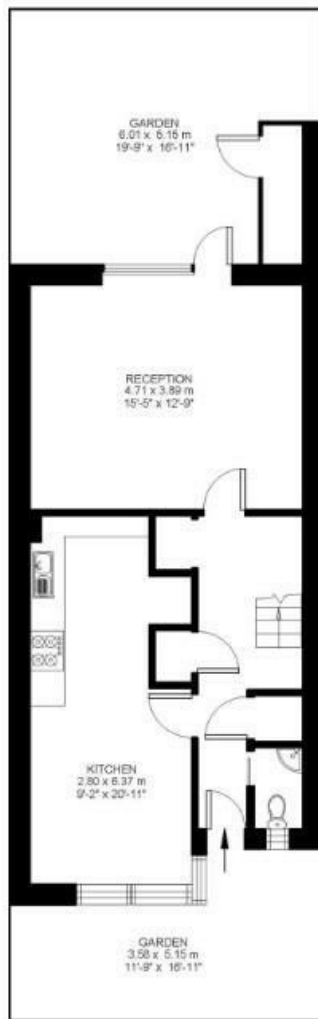
4 Bed House

Approx internal area:

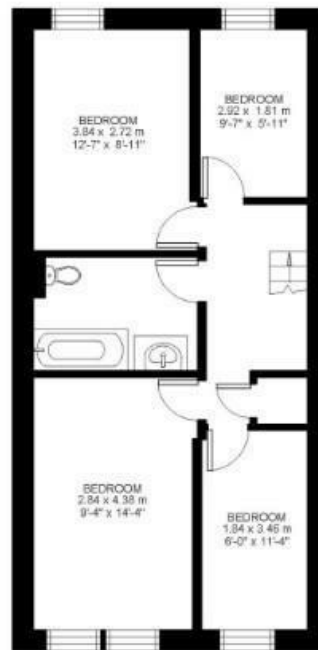
1049 sqft 97 sqm

While we do try our very best, floor plans are produced as a guide only and we take no responsibility for the precise accuracy with which any property is represented

Corry Drive



Ground Floor



First Floor



Corry Drive, Brixton, SW9

