**Somers Road, Brixton, SW2**

3 bedroom house for sale

**£575,000**

Freehold

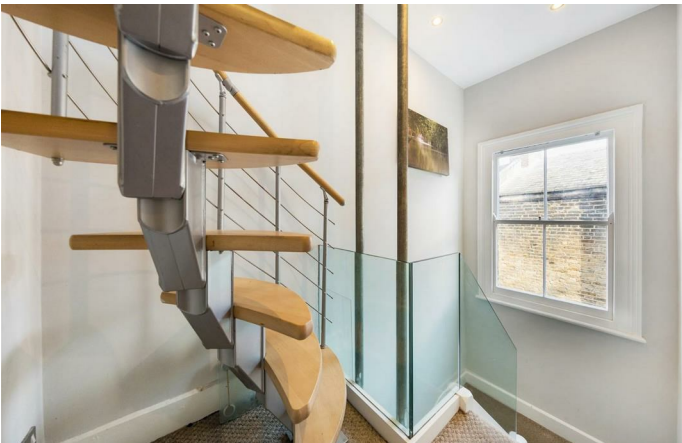
## Property Details

This Victorian terrace house sits off Brixton Hill on Somers Road. Upon entry you're met by a separate reception room which boasts high ceilings, wooden flooring and a bay window. At the rear of the property you have a fantastic kitchen diner with a family bathroom and direct access onto the secluded, private garden. Upstairs you'll find three bedrooms, two of which are well proportioned doubles. The house also been extended into a spacious loft room with plenty of storage in the eaves. Access to Brixton tube is fantastic, a fifteen-nineteen minute stroll or the conveniently located bus-stop a minutes walk away with numerous buses that run all day and night that tend to take no more than five minutes down Brixton Hill. Brockwell Park, Streatham Hill, Clapham, Balham and Tulse Hill are all within reach.

## Features

- Three double bedrooms
- Victorian terrace house
- Two bathrooms
- Converted loft room with built-in storage
- Private patio garden
- Over 900 square feet of internal living space
- Freehold

Council tax band D    EPC rating D (59)



Somers Road, Brixton, SW2

## Somers Road

# K

### 3 Bed House

Approx internal area:

**909 sqft 84 sqm**

(INCLUDING LOFT ROOM)

(EXCLUDING EAVES STORAGE)

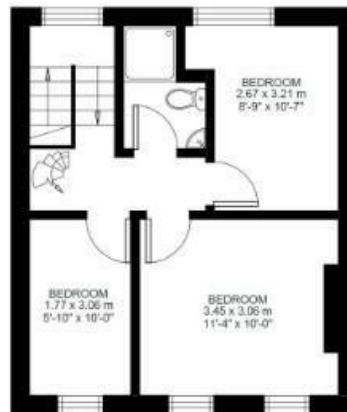
EAVES STORAGE 19.26 SQ.M / 207 SQ.FT

INCLUSIVE TOTAL AREA 105.26 SQ.M / 1133 SQ.FT

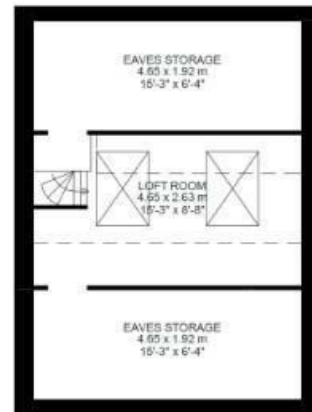
While we do try our very best, floor plans are produced as a guide only and we take no responsibility for the precise accuracy with which any property is represented



Ground Floor



First Floor



Second Floor



Somers Road, Brixton, SW2

