

Raeburn Street, Brixton, SW2

1 bedroom flat - conversion for sale

£460,000

Share of Freehold

Property Details

Set close to the heart of Brixton on the ground floor of this terrace Victorian conversion, a spacious and bright blank canvas. This one double bedroom ground floor flat offers potential buyers the chance to turn this characterful property into something truly their own. A large bay window allows light to flood into the dual-aspect reception room, which opens up through to a bright and contemporary kitchen at the rear of the property, with access to the private garden. The bedroom, also residing at the rear of the property is generous inside and boasts double glass doors that open out onto the pretty south-east facing garden, allowing an enjoyable flow from inside to out. A fully equipped modern bathroom is nestled conveniently just next to the bedroom, with space for utilities. The property also has the added benefit of having access to a cellar offering plenty of storage.

Features

- One Bedroom
- South-east facing private garden
- Victorian conversion
- Sought-after residential street equidistant to Clapham and Brixton
- Access to the Northern and Victoria tube lines
- Walking distance to Brockwell Park and Clapham Common
- Share of freehold
- Chain-free

Council tax band C EPC rating C (71)



Raeburn Street

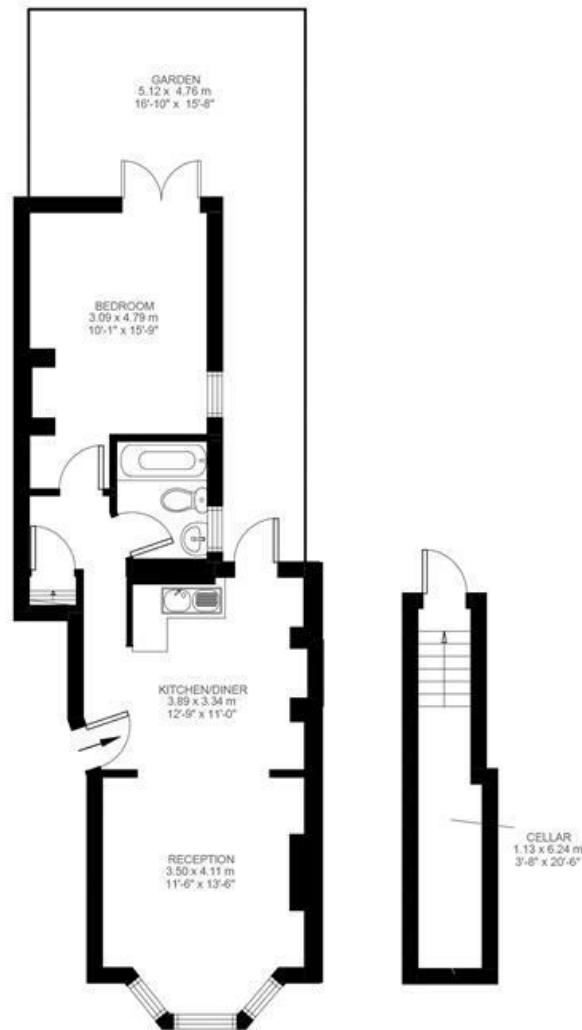


1 Bedroom Flat

Approx internal area:

572 sqft 53 sqm

While we do try our very best, floor plans are produced as a guide only and we take no responsibility for the precise accuracy with which any property is represented



Ground Floor

Basement



Raeburn Street, Brixton, SW2

