

Effra Road, Brixton, SW2

£425,000

2 bedroom flat - purpose built for sale

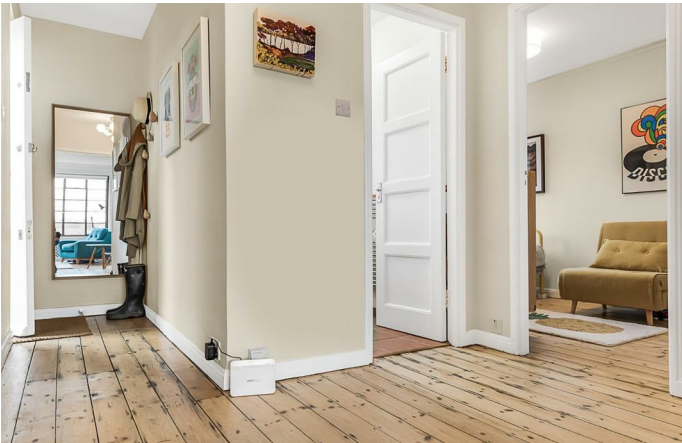
Property Details

A beautifully presented two double bedroom apartment with a private balcony, located on the top floor of a popular residential block on the centrally-located Effra Road. The reception room is exceptionally spacious and boasts large crittal-style windows that allow a bright and airy atmosphere to flood the room. The modern kitchen is tasteful, provides plenty of storage and has the added luxury of integrated appliances. The master bedroom displays the same stylish crittal windows as the reception and matching doors that open out onto the private balcony, which presents pleasant views across the city. The second bedroom is of a fair size and both come with built-in storage. The apartment is completed by a three-piece bathroom, including a characterful free standing roll-top bath. This fantastic flat has been lovingly cared for by its current owner, who has injected an endearing charm into the property, providing a stylish, loft-style aesthetic combined with the characterful and well-maintained original features like the exposed floorboards and the original doors and handles. It has multiple bonuses such as the privacy that a top floor flat boasts, a readily available care-taker and a close-knit neighbourhood community feel.

Features

- Two double bedrooms
- Loft-style living
- Private balcony
- Top floor with far reaching views
- Lift access
- Secure purpose-built block
- Over 640 square feet of internal living space
- Within easy reach of Brockwell park

Council tax band B EPC rating E (44)





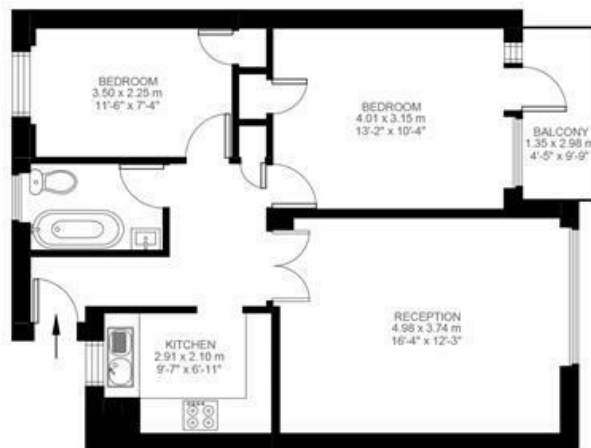
Effra Road

2 Bedroom Flat

Approx internal area:

641 sqft 60 sqm

While we do try our very best, floor plans are produced as a guide only and we take no responsibility for the precise accuracy with which any property is represented



Fourth Floor



Effra Road, Brixton, SW2

