



Elm Park, Brixton, SW2

2 bedroom flat - conversion for sale

£599,950

Share of Freehold

Property Details

A brand newly refurbished, two-bedroom, two-bathroom flat with a large decked garden and a fantastic open-plan living space. Elm Park is a popular residential road, perfectly positioned within close proximity to the wonderful greenery of Brockwell Park, and all that central Brixton has to offer. This beautiful, double glazed Victorian garden flat has been renovated throughout, with care and attention to detail, making use of all available living space to create a stunning apartment that feels like a home, the moment you walk through the door. A fifteen-minute walk across the park brings you to Herne Hill station and the many pubs, cafes and restaurants of Herne Hill. Purchasers have the popular establishments on Brixton Hill within touching distance, including F Mondays, Stir Coffee, Pizza Brixton and the ever-popular White Horse Pub, as well as neighbourhood favourite, the Elm Park Tavern, just over the road.

Council tax band EPC rating (null)

Features

- Two double bedrooms
- Two bathrooms
- Victorian conversion
- Newly refurbished throughout
- Over 750 square feet of internal living space
- Quiet residential street located off Brixton Hill
- Walking distance to Brockwell Park
- Chain-free
- Share of freehold



Elm Park

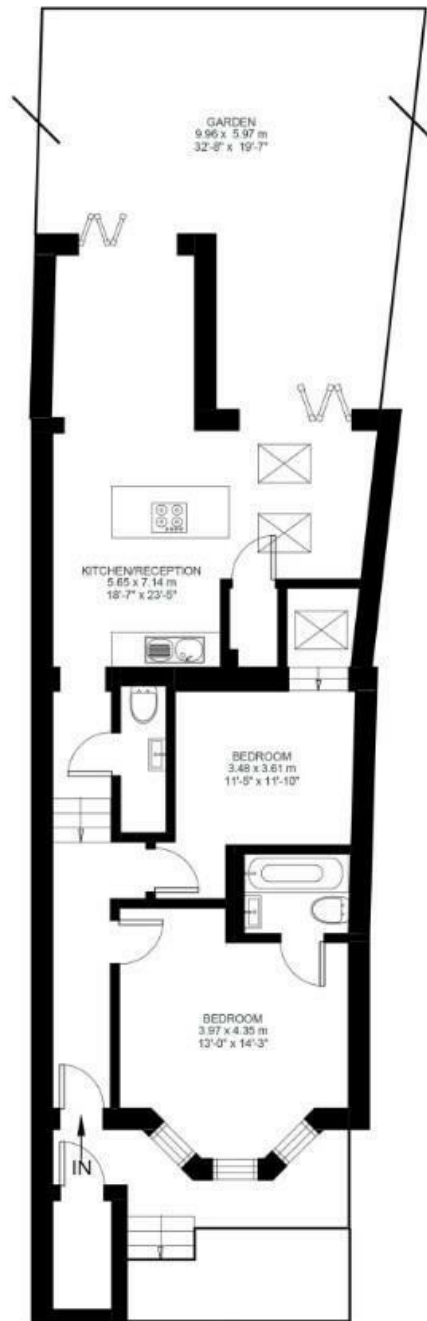
K

2 Bed Flat

Approx internal area:

766 sqft 71 sqm

While we do try our very best, floor plans are produced as a guide only and we take no responsibility for the precise accuracy with which any property is represented



Lower Ground Floor



Elm Park, Brixton, SW2

