

Josephine Avenue, Brixton, SW2

£565,000

2 bedroom flat for sale

Property Details

The flat is located quietly at the back of the building, overlooking the peaceful south-east facing shared garden. The open plan kitchen/reception room is a bright and stylish space with ample room for dining, relaxing and entertaining, and benefits from an abundance of natural light thanks to multiple sash windows, offering views over the leafy gardens. The country-style kitchen oozes charm whilst offering a high standard of practicality, with plenty of storage and top of the range appliances. Adjacent in the hallway, there is some fantastic storage in the form of a convenient cloakroom. The two bedrooms are tucked away quietly to the rear of the flat. The master bedroom is a generous size, served by a sleek shower room, whilst the second bedroom is also a comfortable double room, ideal for use as a guest room, study, or even to rent out if needed. The bedrooms are separated by a contemporary family bathroom with trendy tiling, benefitting from a sash window.

Features

- Two double bedrooms
- Large open-plan living space
- Over 700 square feet of internal living space
- Two bathrooms
- Highly sought-after location
- Tastefully decorated throughout
- Communal garden
- Close to Brockwell Park
- Chain-free

Council tax band D EPC rating B (81)





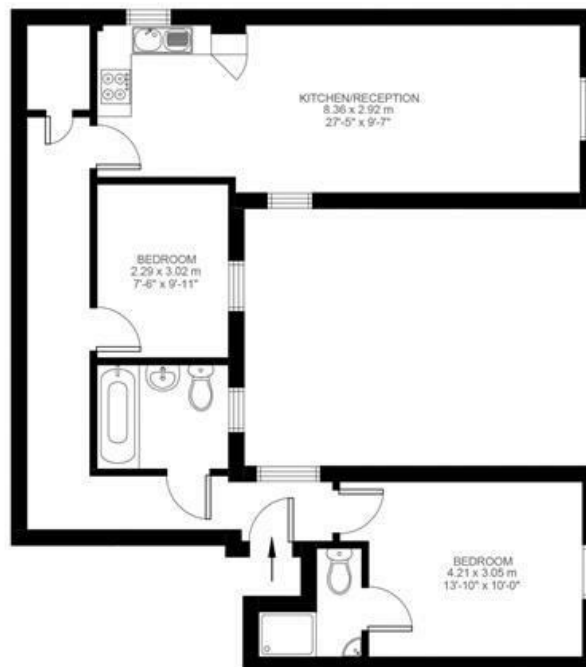
Josephine Avenue

2 Bedroom Flat

Approx internal area:

715 sqft 66 sqm

While we do try our very best, floor plans are produced as a guide only and we take no responsibility for the precise accuracy with which any property is represented



First Floor



Josephine Avenue, Brixton, SW2

