



Corrance Road, Brixton, SW2

2 bedroom flat - conversion for sale

£520,000

Share of Freehold

Property Details

A charming example of a ground floor two double bedroom garden flat, nestled in a converted Victorian townhouse, this bright and airy property on Corrance Road will tick boxes for a wide range of purchasers. The apartment is perfectly positioned on a quiet residential street which is highly sought after for its character, feel and equidistance between Clapham and Brixton. The bars and restaurants of Acre Lane are a short walk and within a ten-minute stroll down the road, you will have everything that Brixton has to offer, from Brockwell Park and the extremely popular Brixton Village, to large brand-shops and excellent transport links. Share of freehold.

Council tax band C EPC rating (null)

Features

- Two double bedrooms
- Ground floor Victorian conversion
- Naturally well-lit throughout
- Private garden
- Over 640 square feet of internal space
- Highly demanded residential area in-between Clapham and Brixton
- Share of freehold



Corrance Road, Brixton, SW2

K

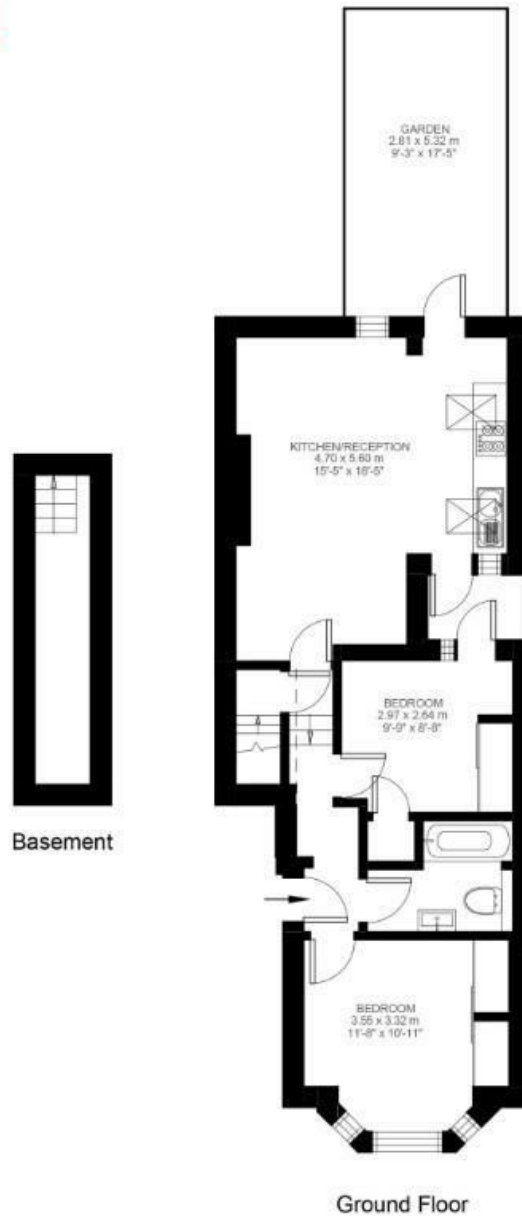
Corrance Road

2 Bedroom Flat

Approx internal area:

642 sqft 60 sqm

While we do try our very best, floor plans are produced as a guide only and we take no responsibility for the precise accuracy with which any property is represented



Corrance Road, Brixton, SW2

