

**Strathleven Road, Brixton, SW2****£575,000**

2 bedroom flat - conversion for sale

## Property Details

This ideally situated, split-level, two double bedroom apartment brings an exciting opportunity to stamp your own mark in the highly sought after residential pocket that sits equidistant from Clapham High Street and central Brixton. The property has been recently decorated throughout and well maintained. Both bedrooms are large doubles of a similar size, one of which resides on the ground floor overlooking the private garden, the second on the first floor next to a modern family bathroom. This is ideal for anyone looking to rent out a spare room or share with friends as the split level provides coveted privacy that isn't provided in many Victorian conversions of a similar size. A handsome reception room occupies the front of the property, with plenty of space to dine, entertain or unwind, with a large bay window, generously feeding the large room with natural light, whilst overlooking the sleepy residential street on which this property resides. There is also a contemporary, integrated kitchen on the ground floor which opens out to the charming private garden, the ideal low-maintenance space for any green-thumbed purchasers, or those who just wish to have their own private spot to enjoy the outdoors.

**Council tax band C**    **EPC rating D (63)**

## Features

- Two double bedrooms
- Split-level Victorian conversion
- Private garden
- Bright and airy throughout
- Over 720 square feet of internal living space
- Local amenities in moments
- Both Brixton and Clapham in under 10 minutes
- Chain-free





Strathleven Road, Brixton, SW2

# K

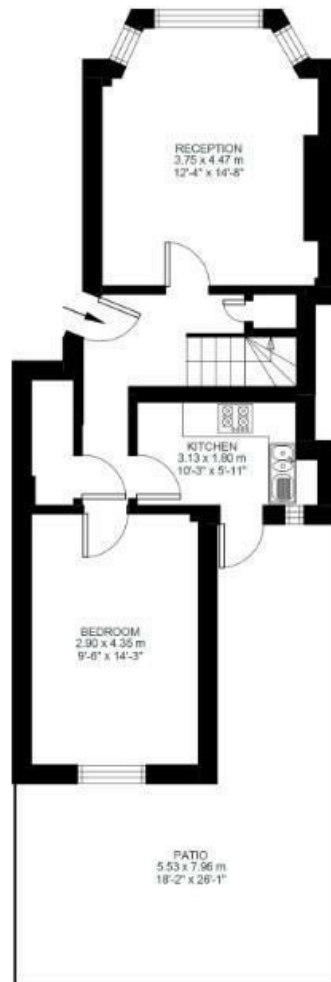
## Strathleven Road

2 Bed flat

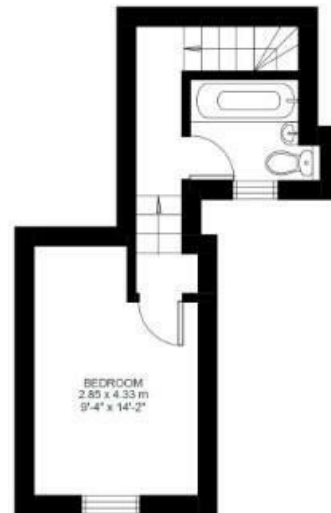
Approx internal area:

**721 sqft 67 sqm**

While we do try our very best, floor plans are produced as a guide only and we take no responsibility for the precise accuracy with which any property is represented



Ground Floor



First Floor



Strathleven Road, Brixton, SW2

