



**Pulross Road, Brixton, SW9**

4 bedroom house for sale

**£999,950**

Freehold

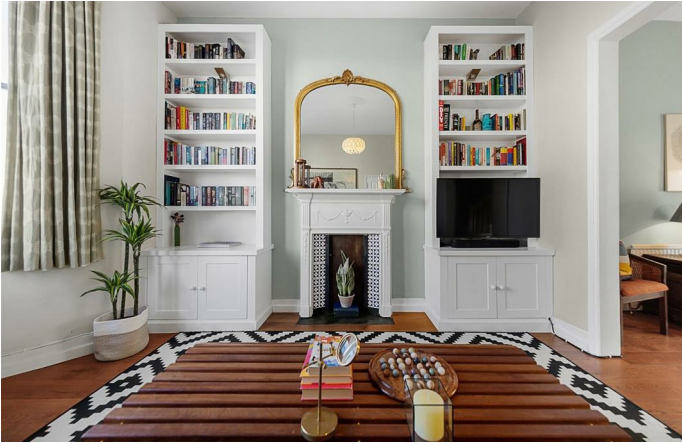
## Property Details

An elegant and characterful four double bedroom Victorian terraced townhouse perfectly positioned between amenities in Brixton, Clapham and Stockwell. The transport links are ideal with three overground stations on different lines within easy reach, as well as the first stop on the Victoria line at Brixton tube station and the Northern Line at Stockwell and Clapham North, its location cannot be overstated. The building says quality from top to bottom, with fantastic dimensions and over 1500 square feet of internal living space. There is also the opportunity to add value by extending into the loft space (subject to the necessary permissions) and increasing the overall square footage. This property is situated right in the heart of Brixton's cultural hub - a three-minute stroll to Brixton tube station, just around the corner from Windrush Square, Brixton Village, The Ritzy and POP Brixton, this street seems a world away. This house is perfect for anyone who wants to be close to the action but would prefer to retain a sense of calm.

Council tax band D    EPC rating (null)

## Features

- Four double bedrooms
- Victorian terraced house
- Over 1500 square feet of internal space
- Private South-facing garden
- Beautifully presented throughout
- Development potential
- Quiet residential road moments from the heart of Brixton
- Walking distance to Brockwell Park, Clapham and Stockwell High Streets
- Victoria & Northern tube lines
- Chain-Free





Pulross Road, Brixton, SW9

**K**

4 Bedroom House

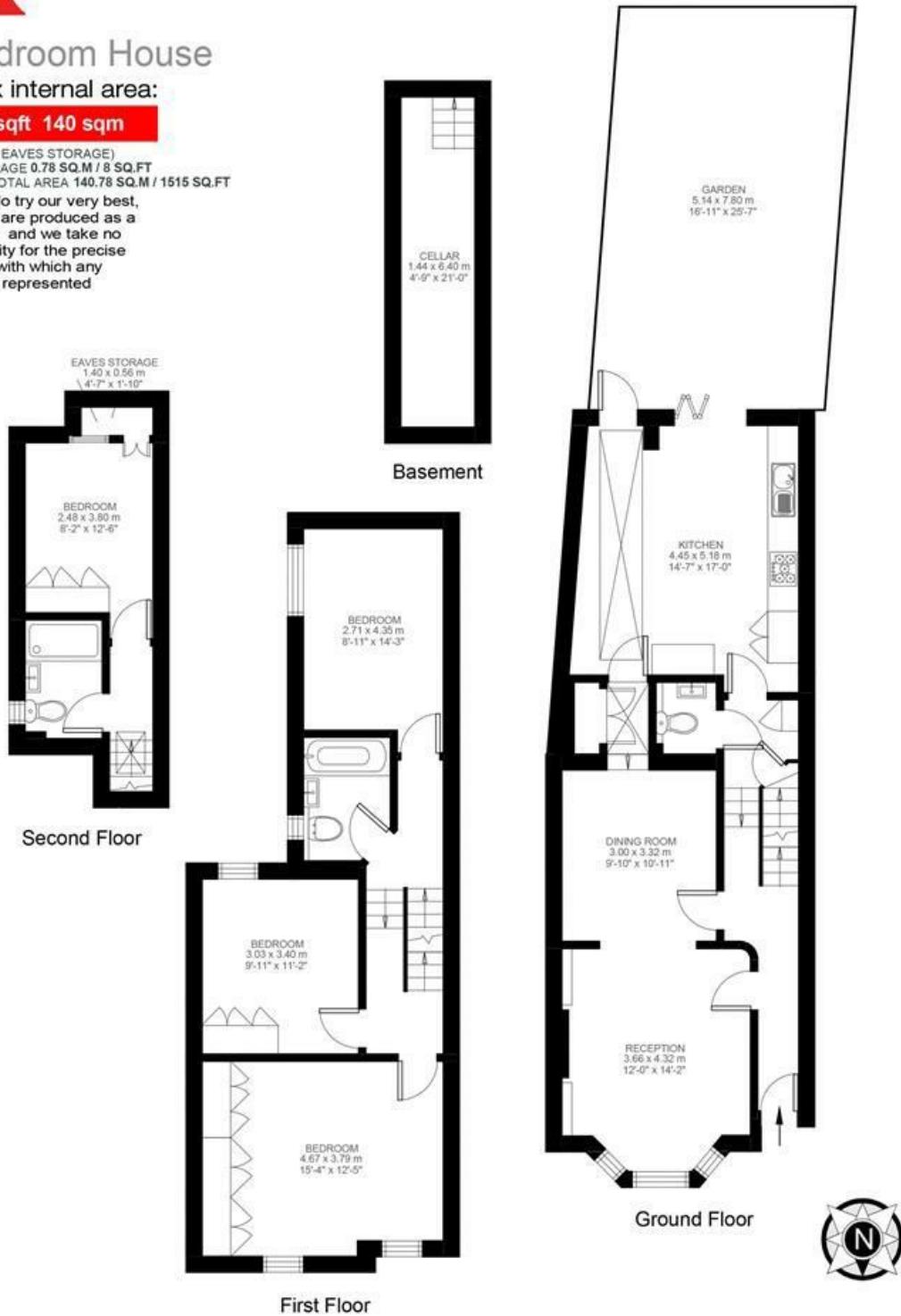
Approx internal area:

**1503 sqft 140 sqm**

(EXCLUDING EAVES STORAGE)  
EAVES STORAGE 0.78 SQ.M / 8 SQ.FT  
INCLUSIVE TOTAL AREA 140.78 SQ.M / 1515 SQ.FT

While we do try our very best,  
floor plans are produced as a  
guide only and we take no  
responsibility for the precise  
accuracy with which any  
property is represented

Pulross Road



Pulross Road, Brixton, SW9

