

Belvedere Place, SW2

£525,000

2 bedroom flat - purpose built for sale

Property Details

This network of modern flats and mews houses have always been popular and we've had excellent reviews by those who have bought them since they were built in 2000. As far as locations go, it's hard to beat: a five-minute stroll down Acre Lane and purchasers will find themselves in the heart of Brixton, with the Ritzy Cinema, Brixton Village, Pop Brixton and everything in between. This apartment, quietly nestled on the first floor, has plenty of natural light and a spacious entrance hall, off which open all rooms, including an open-plan reception room with a Juliette balcony, and a modern, well-equipped kitchen. The master bedroom is a great size and comes with an en-suite bathroom. The second bedroom is a great option for anyone looking to rent out a room, guest bedroom or child's bedroom. In addition there is a study which could be repurposed as a third bedroom, dressing room or for truly anything the purchaser desires. There is plenty of built-in storage, perfect for hiding away all the clutter purchasers accumulate over time. Last but not least there is a contemporary family bathroom and the benefit of secured bike storage. All in all, this secluded apartment ticks boxes and offers a secure home in a central location - we really like it.

Features

- Two double bedrooms plus study
- Quiet mews development
- Two bathrooms
- Juliet balcony
- Communal gardens
- Walking distance to Northern and Victorian lines
- Off-street allocated parking
- Central location, close to the action

Council tax band EPC rating C (77)





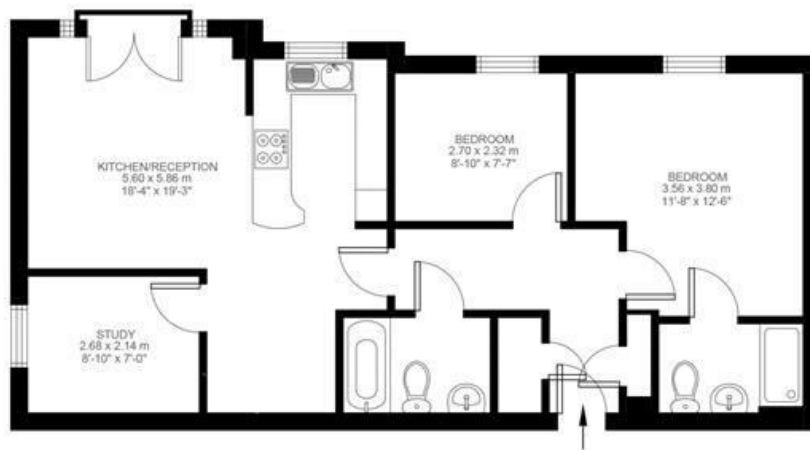
Belvedere Place

2 Bedroom Flat

Approx internal area:

720 sqft 67 sqm

While we do try our very best, floor plans are produced as a guide only and we take no responsibility for the precise accuracy with which any property is represented



First Floor



Belvedere Place, SW2

