



**Kingswood Road, SW2**

3 bedroom flat - conversion for sale

**£625,000**

Share of Freehold

## Property Details

A beautifully presented three double bedroom, split level apartment in an attractive Victorian terrace on a popular road between Brixton and Clapham. With over 1000 square feet of well distributed internal space. Situated at the front of the building is a wonderfully airy reception room with large sash windows (there are new double-glazed timber sashes in every room). This is a gorgeous room with high ceilings that really amplify the sense of space. Adjacent is the first of the three bedrooms, currently occupied as a home office. Down the hallway is a large eat-in stylish kitchen, finished to a fantastic standard and providing all you need in terms of appliances, storage and worktop space. Upstairs, the second floor comprises two further bedrooms. All three rooms seem almost equal in size and both come with the addition of built-in storage as a bonus. With multiple rooms to occupy, there is an abundance of potential uses which include a guest room, dressing room, child's bedroom, home office or anyone looking to rent out a bedroom as additional income. The well maintained shared garden is a gorgeous bonus and the ideal spot to enjoy the warmer months. Between the charming outside space, all the endearing Victorian character of the feature fireplaces and ceilings, plus the property being split over various levels, it feels like a true home.

Chain-free.

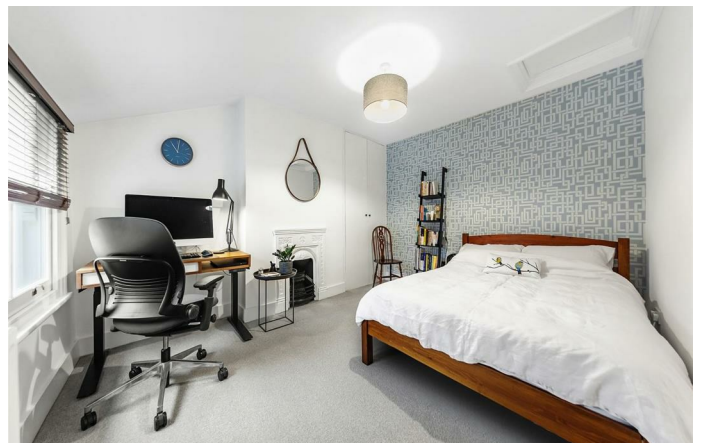
## Features

- Three double bedrooms
- Victorian conversion
- Split-level
- Shared garden
- Over 1000 square feet of internal space
- Bright and airy throughout
- Popular location between Clapham and Brixton
- Share of freehold
- Chain-free

Council tax band D

EPC rating D (65)









Kingswood Road, SW2



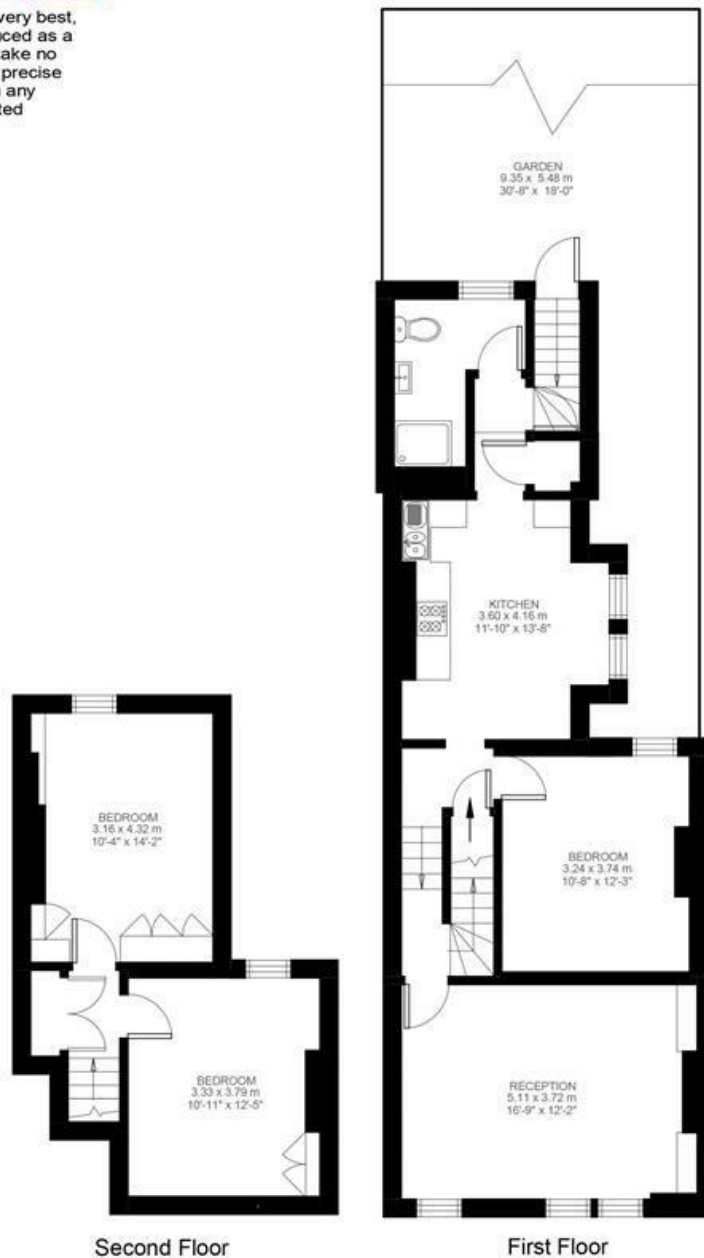
## 3 Bedroom Flat

Approx internal area:

**1029 sqft 96 sqm**

While we do try our very best, floor plans are produced as a guide only and we take no responsibility for the precise accuracy with which any property is represented

# Kingswood Road



Kingswood Road, SW2

