



Wingford Road, Brixton, SW2

£560,000

2 bedroom flat - conversion for sale

Property Details

A handsome and beautifully presented two double bedroom, split level apartment in an attractive Victorian terrace on a popular road between Brixton and Clapham benefitting from its own front door. With almost a thousand square feet of internal living space and a private garden, this property is a rare find and will tick boxes for a wide range of purchasers. Occupying the front of the building and spanning the width of the property, a wonderfully airy and characterful reception room, complete with sash windows, a feature fireplace and attractive bespoke storage units. This gorgeous room provides enough space to dine as well as relax and unwind with high ceilings that really amplify the sense of space. Adjacent to the reception, the first of the two well-proportioned double bedrooms, complete with built-in storage and views over the gardens to the rear. A family bathroom serves the property, modern and inviting with sleek white tiling. An attractive and spacious kitchen resides at the rear of the property, offering a multitude of surface space and storage options with enough space to dine whilst fresh air and light brings the outside in through the double doors that open out to the private decked garden below. The top floor of the property boasts an impressive loft extension in which a well-appointed second bedroom resides, served by multiple windows and a smart, modern bathroom.

Features

- Two double bedrooms
- Two bathrooms
- Split-level
- Victorian conversion
- Chain free
- Private garden
- Almost 1000 square feet of internal space
- Quiet residential street close to local amenities
- Walking distance to the Victoria and Northern tube lines
- Own front door

Council tax band D EPC rating D (58)



K

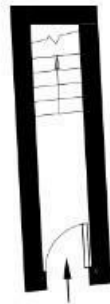
Wingford Road

2 Bedroom Flat

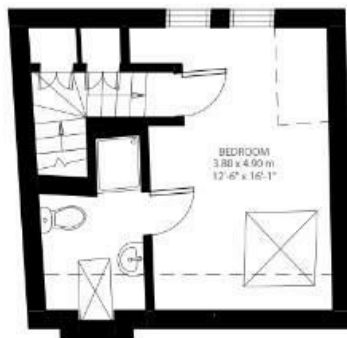
Approx internal area:

920 sqft 85 sqm

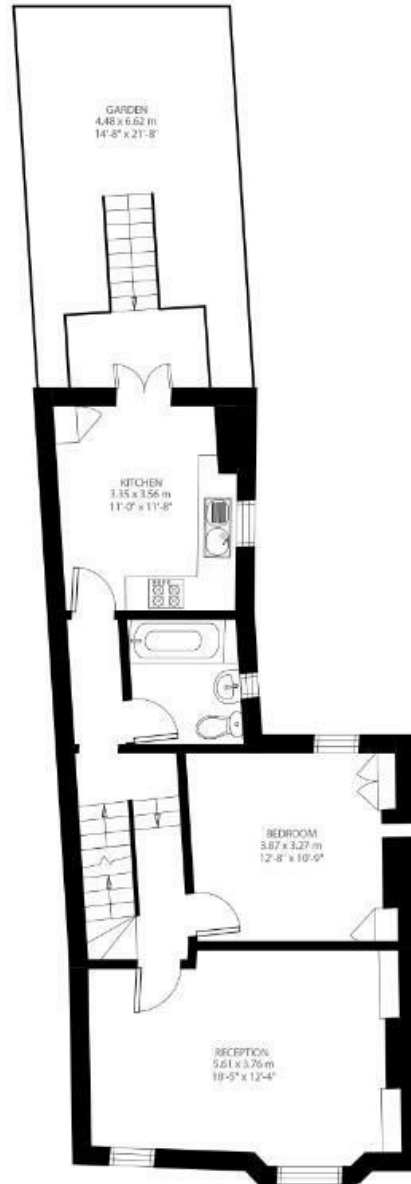
While we do try our very best, floor plans are produced as a guide only and we take no responsibility for the precise accuracy with which any property is represented



Ground Floor



Second Floor



First Floor



Wingford Road, Brixton, SW2

